

Table of Contents

	Page
Who are we?	1
How do we operate?	1
What is our role?	2
Our People	3
Chair's Report	4
Executive Officer's Report	6
Treasurer's Report	7

Regional Reports from the Board

Cape York Peninsular – Jason Carroll	8
Southern and Northern Gulf – Mark van Ryt	10
Desert Channels – Ann Ballinger	12
South East Queensland – Brian Venz	14
Wet Tropics – Rhonda Sorensen	16
South West – Scott Sargood	18
Fitzroy – Michelle Hanrahan	20
Burnett – Phillip Moran	22
Burdekin/Mackay Whitsunday – Graham Armstrong	24
Condamine – MaryLou Gittins	26
Queensland Murray Darling – Geoff Elliot.....	28

Financial Performance

Auditor's Report	30
People we work with	39
Contact details	39



Left to right - Darryl Ebenezer (EO); Geoff Elliot (Chair); Graham Armstrong; Phil Moran; Mark van Ryt; Rhonda Sorensen; Jason Carroll; MaryLou Gittins; Scott Sargood, Ann Ballinger; Brian Venz

Who are we?

Queensland Water and Land Carers Inc. (QWaLC) is the peak body for NRM volunteers in Queensland. We are an independent, non-government, not-for-profit organisation. QWaLC formed in April 2004 to fill an important need in supporting the valuable work of volunteer community groups in the Natural Resources Management sector across Queensland. We currently have a membership of over 350 groups with close to 30,000 individual members. We work on behalf of thousands of natural resource management volunteers across our vast state.

How do we operate?

The organisation is answerable to our membership, which is made up of a broad range of volunteer NRM groups. Members include Landcare, Coastcare, Waterwatch, Bushcare, catchment associations, conservation groups regional bodies and subregional organisations.

The organisation is incorporated and governed by a constitution* that sets out the objectives, powers and administrative arrangements.

QWaLC's network extends across the 14 NRM regions of Queensland, each of which is represented by a QWaLC Board Member elected from the region.

For QWaLC's Constitution go to:

<http://QWaLC.org.au/wp-content/uploads/2015/07/2014.08.13.QWaLC-CONSTITUTION-Final.pdf>

What is our role?

As Queensland's peak body for NRM volunteers, QWaLC fulfils the following roles:

Networking—QWaLC is part of a large NRM network that encompasses volunteer NRM groups, regional bodies, government representatives and industry personnel. We facilitate the exchange of strategies, information, skills and resources. We develop and improve links between volunteer NRM groups, regional organisations and government agencies.

Promotion—QWaLC is dedicated to promoting the achievements of natural resource management volunteers across the state.

Representation—A community representative board is a core pillar to the overall make up of QWaLC – and these members ensure that community volunteers have an opportunity to participate and contribute to policies and issues that specifically relate to their region at a localised level. It is the role of your Board members to ensure that they actively engage with member groups and bring forward their views and opinions to be represented at a State and National levels.

Advocacy—QWaLC exists in Queensland to advocate specifically on behalf of NRM volunteers. The volunteer NRM sector is vital to the Queensland economy, investing many thousands of hours of volunteer's time into practical environmental outcomes. QWaLC role is to ensure that this contribution is an important consideration in any decisions made regarding the voluntary NRM sector.

Insurance—QWaLC assists groups in their practical work throughout the state by the provision of three vital insurance policies - Association Liability; Public and Products Liability; and Volunteer Accident.



Our people.

QWaLC Board

QWaLC's Board plays an integral part of its role as the peak body for natural resource management (NRM) volunteers. The Board consists of a community representative from across each of Queensland's 14 NRM regions. Our Regional Board Members represent their regions and highlight the issues and achievements in each allowing QWaLC to be truly representative of the whole State and to keep in touch with on-ground volunteers.

The Board

Region	Role	Name
Qld. Murray Darling	Chair	Geoff Elliot
Cape York & Torres Strait	Deputy Chair	Jason Carroll
Burdekin/Mackay Whitsunday	Treasurer	Graham Armstrong
Condamine	Secretary	MaryLou Gittins
Burnett Mary	Board Member	Phil Moran
Southern/Northern Gulf	Board Member	Mark van Ryt
Fitzroy	Board Member	Michelle Hanrahan
South West Qld.	Board Member	Scott Sargood
Wet Tropics	Board Member	Rhonda Sorensen
South East Qld.	Board Member	Brian Venz
Desert Channels	Board Member	Ann Ballinger
Statewide	Board Appointment	Peter Stevens

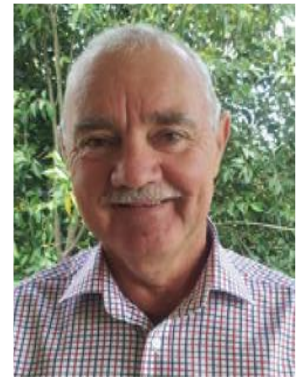
Sub Committees

	Chaired by
Governance and Planning	Geoff Elliot
Communication, Marketing & Branding	MaryLou Gittins
Insurance and Risk	Phil Moran
Member Engagement	MaryLou Gittins
Finance and Audit	Graham Armstrong

Staff

Statewide	Executive Officer	Darryl Ebenezer
-----------	-------------------	-----------------

Chair's Report



This marks the completion of my third year as Chairman of QWaLC and once again it has been an extremely busy year with local, State and Federal issues and events.

QWaLC's Board and organisational structure is now working well with the formation of sub-committees, as opposed to an Executive Committee undertaking all of the operational and decision making functions.

We now have full Board representation across all regions. Our current Board members are: Jason Carroll, Deputy Chair (Cape York), MaryLou Gittins, Secretary (Condamine), and Graham Armstrong, Treasurer (Mackay Whitsunday), Michelle Hanrahan (Fitzroy), Phillip Moran (Burnett Mary), Mark van Ryt (Northern & Southern Gulf), Scott Sargood (South West), Rhonda Sorensen (Wet Tropics), Ann Ballinger (Desert Channels), Brian Venz (South East Qld) and Peter Stevens (Board Appointee). Acknowledgement and appreciation is extended to the whole Board for consistent input into the effective and smooth operation of the organisation over the year.

Recognition and thanks are also extended to our Executive Officer, Darryl Ebenezer and contractual staff Lane Pilon (Administration), Glen Donoghoe (Project Reporting/Survey) and Melissa Robinson (Communications).

Operationally, meetings throughout the report period included two face-to-face Board meetings (Brisbane and Cairns) and two teleconferences, as well numerous sub-committee teleconferences and phone calls.

On behalf of our many natural resource management volunteers, over the last twelve months QWaLC's activities have included:

REPRESENTATION

It's encouraging to see that our membership has continued to grow this year. As the peak body for natural resource management in Queensland, QWALC provides key services for over 400 groups and well in excess of 30,000 volunteers throughout the State.

ADVOCACY

QWaLC advocates on key issues on behalf of member organisations. Through information received from the member surveys it's been of interest to note that the priority issues of the last reporting period are still of major concern today.

Following the State elections held late last year, QWaLC met with new sitting members, senior advisors and bureaucrats of the present Government's NRM, Environment and Heritage Protection and Agriculture and Fisheries Departments, as well as the Shadow Ministers for Environment and Heritage Protection and Natural Resources and Mines, in their respective electorates as well as cross bench representatives, regarding current pressing issues affecting our members. In particular, at these meetings, discussions focussed on the need to secure ongoing funding for a Landcare Coordinator program. A precedent and working model for this project has been set by Victoria and NSW and we have proposed to the Government a variation based on the best working parts of these existing programs.



The strategic document 'Living Landscapes, Local Livelihoods' which acts as an integral guiding tool outlining natural resource management purposes, goals and vision, was used extensively by NRM Regions Queensland and QWaLC (joint authors) to present a combined front when advocating to Government for stronger community-based delivery of natural resource management leading up to the election.

QWaLC continues to advocate on behalf of volunteers in protecting the Great Barrier Reef, being involved in NRM discussions and the pressing need for a Small Environment Grants program.

NETWORKING

On behalf of QWaLC over the last 12 months I continued to represent Queensland on the Board of the National Landcare Network (NLN). As well as regular teleconferences, the NLN met in Adelaide and Canberra. The outcome from these meetings is knowledge sharing amongst the States and Territories, and through this process the opportunity for informal benchmarking.

A significant ongoing process at present is the proposed merger between Landcare Australia Limited (LAL) and the NLN. These discussions are well under way and appear to be going in the right direction.

Other networking opportunities throughout the year occurred at the combined QWaLC & NRM Regions Queensland Executive meeting, the Natural Resource Management Forum at QUT, a gathering of the NRM Regions Queensland held in honour of Mike Berwick (former Chair), and the QWaLC Regional Forums held over recent months.

In November 2017 I attended the inaugural International Landcare Conference held in Tokyo Japan. QWaLC was fortunate to receive a grant from Landcare International to cover the trip. The conference was well attended with over 50 delegates from countries right across the globe. In general, the emerging Landcare movement across all continents is experiencing similar issues as being dealt with in Australia.

PROMOTION

QWaLC was again the proud sponsor of the annual Maleny Wood Expo's Wootha Prize and Junior Landcare Paddock events. Sponsorship support was also provided to other groups and activities throughout the year including the Australian Citizen Science Association, Tangaroa Blue Foundation, Sunshine Coast Environment Council's World Environment Day and the Mary River Catchment Coordinating Committee's Noosa Festival of Water.

INSURANCE

New applications continue to be received from statewide NRM volunteer groups seeking to become members of QWaLC. A new provider of insurance has been negotiated and put in place to provide the policy requirements of our members and is working well.

WHAT'S TO COME

Our Annual General Meeting will be held in Brisbane again this year in early November. Elections will be held prior to the 2018 AGM in the regions of Fitzroy, Desert Channels, Cape York, Burnett Mary and Mackay Whitsunday.

Acknowledgement is given for the funding support received from the Queensland State and Federal Governments, as well as support received from the National Landcare Network, Landcare Australia Limited, NRM Regions Queensland and, most importantly, the encouragement from the many natural resource management volunteers throughout Queensland.

QWaLC is a resilient body representing grass roots members. As a group we possess a positive outlook and I look forward to being involved with this effective organisation into the future.

"Volunteering is the ultimate exercise in democracy. You vote in elections once a year, but when you volunteer, you vote every day about the kind of community you want to live in." – Author Unknown


Geoff Elliot
Chair

Executive Officer's Report



As our Chair, Geoff, has commented in his report we have seen continued growth in our membership. We are now sitting at just over 400 member groups.

The QWaLC virtual office arrangements continue to work well. No matter where I am in the State I am able to respond to phone and email enquiries. Throughout the year I have been able to visit many parts of the State and had the pleasure of meeting a diverse range of people from our member groups. Seeing first-hand the work people are engaging in is a great privilege.

Your Board Members have been engaged in their regions and participate in their own group activities. Along with the Board, I have had the opportunity to see and hear about the stories of many member groups and their volunteers and, in some cases, staff. When we combine this with meetings and surveys this gives us the confidence and the necessary information to progress sharing and advocating the needs of volunteer environmental groups and their members.

The State Landcare Awards were held last November. Congratulations to all the finalists and I look forward to seeing who wins at the National Landcare Awards in Brisbane in 2018. These awards were made possible by support from Landcare Australia.

The membership and insurance survey brought to light some interesting figures that you can see highlighted in the infographic. The dollar value of the many hours that people contribute is impressive. The figure for the number of people employed by groups around the State was also much higher than previously thought. Look out for the next member and insurance survey in late January 2019. The information you provide is appreciated and most importantly helps us to convey and support the vital work member groups undertake. Our thanks to AON, Gary and his colleagues for their continued assistance with insurance cover for member groups. This cover is only possible due to funding received from the Queensland Government Department of Natural Resources, Mines and Energy.

Our continued membership of the National Landcare Network, Volunteering Queensland and Community Council for Australia expose us to a great deal of information and resources, as well as giving us the opportunity to contribute at the national level. We have continued this year to provide feedback and information to them from our grass roots membership. Contributions to senate enquiries were well worth the effort.

A highlight in November 2017 was the opportunity to attend the 1st International Conference of Landcare Studies in Nagoya Japan. A well-attended and very informative event that showcased Landcare activities from around the world.

I would like to thank Andrew Drysdale and Lane Pilon from NRM Regions Queensland for their hard work and demonstrated commitment to working with us to provide a better environment for all Queenslanders. Being able to attend meetings with Government Officers and progress important guiding documents such as 'Living Landscapes, Local Livelihoods' has been especially helpful. Positive changes are underway in Queensland throughout all the NRM Management Units (regions) so make sure you keep up with what your NRM Regional Body is doing.

Thanks to Geoff and all of the QWaLC Board Members for their advice, involvement and contributions to the work we undertake. A special acknowledgment to all the volunteers who generously share with me their time, stories, passion and allowing me to see how they are making a positive difference in their communities.

I look forward to another year of advocating for the diverse needs of members.

A handwritten signature in black ink, appearing to read 'D Ebenezer'.

Darryl Ebenezer
Executive Officer

Treasurer's Report



At the last AGM I was formerly appointed to the position of Treasurer for QWaLC.

The 2017/18 external financial audit was conducted by John Gosper Audit & Assurance Pty Ltd. I can report that the independent auditors have found no significant deficiencies in QWaLC's financial statements for the financial year 2017/18. Please refer to the included auditor's report and accompanying financial statements.

The majority of the income during the year originated from the welcome support for our activities from the Queensland Government through the Department of Natural Resources, Mines and Energy (DNRME) \$350,000.00, the National Landcare Network \$95,000.00. Landcare Australia also provided some funds to support the annual Queensland Landcare Awards. On behalf of our Member Groups and the QWaLC Board I extend our gratitude to these bodies for their essential financial support.

Major outgoings were similar to those of last year, the costs being incurred in achieving contract and grant milestones and in ensuring the organisation functions in line with regulatory requirements. Employee, Contractor and Board costs were our major items. There were also costs associated with obtaining the appropriate level of insurance for the many volunteers supporting our Member Groups. As mentioned by the Chair, Geoff Elliot, a number of groups received sponsorship from QWaLC to hold some great events over the year. The Junior Landcare Paddock was a great attraction. One new cost at the end of the year was the purchase of a vehicle for the organisation. It is anticipated that the initial capital outlay of \$25,000.00 will be progressively offset by the reduction in mileage and other travel expenses that have normally been reimbursed to the EO.

As you can see from the 2017/18 Profit & Loss statement a net loss for the period of \$266,148 which is due to the timing of incoming payments from the Queensland Department of Natural Resources, Mines and Energy (DNRME) in last financial year versus the expenditure on the associated projects during this financial year. This effect has flowed through to Balance Sheet which shows a total equity of \$192,025, down substantially from around \$458,000 at the end of the previous year.

The Treasurers role is supported by those Board Members on the Finance & Audit Sub-committee and I extend my thanks for their support their participation during sub-committee meetings, particularly around discussions required in establishing the QWaLC budget for the coming year. I would also like to acknowledge the work of the EO, Darryl Ebenezer and QWaLC's book keeper Dorian Pozzan for their ongoing diligence and reliability in dealing with the organisation's financial processes & procedures.

A handwritten signature in black ink, appearing to read 'Graham Armstrong', written over a white background.

Graham Armstrong
Treasurer

REGIONAL REPORTS FROM THE BOARD

This has been another marvellous year for Landcare on Cape York. Our four most active groups, Cape York Weeds and Feral Animals, South Cape York Catchments, The Wenlock Catchment Management Group and The Rossville and Districts Citizen Association all benefited from the support provided by QWaLC. Activities across the groups included roadside and beach clean ups, weed control, riparian restoration, wetland condition monitoring, training days and community awareness events.

The Great Barrier reef has continued to be a key focus of Landcare projects in South Eastern Cape York. CYNRM, Landholders, Indigenous Rangers and Landcare groups have worked together on projects that aim to reduce sediment run off into the Normanby River. Central to this work has been intensive gully remediation, controlling unmanaged stock and fire management to improve late season ground cover.

Supporting these sediment reduction project has been an extensive water monitoring program. To better use our resources and share knowledge more than 10 organisations across Cape York came together to form the Cape York Water Monitoring Partnership. Members of the partnership have been continually providing important water quality data for waters entering the great barrier reef.

One of the Cape York Water Monitoring Partnership members are the Laura Rangers. The rangers have been managing automatic stream sampling gauges in the east and west Normanby Rivers. These machines take water samples at 0.5m changes in stream height and keep them refrigerated, however, the samples must be collected within 48 hours. The Rangers trialled a new design of the flow chamber, which records conductivity and turbidity. The original design could not handle the extremely high sediment loads these rivers carry during a flood event. The Laura Rangers received a visit from four of the Tolowa Dee-ni first nations people from California USA. The Tolowa Dee-ni had heard excellent reports concerning the Queensland Land and Sea Indigenous Ranger program and, as they are hoping to start their own ranger program, decided to visit and see how Laura's operated.

There was a surprising number of overlaps in their work, particularly in water monitoring projects. The rangers escorted them to Quinkan and Giant Horse galleries and explained the significance of the art work and discussed natural and anthropogenic conservation issues.



Above - QWaLC Youth Land event.



CAPE YORK AND THURSDAY ISLANDS JASON CARROLL



One key event supported by QWaLC this year was a Youth Forum (*photo left*). The forum was attended by nearly 30 Indigenous Rangers and Youth Workers.

It was a great opportunity to bring like-minded people together and develop skills and understanding of how to work with young people. The aim of the forum was to learn how to create experiences that involve young people in Country and Culture, develop character and result in life change. We noted that Elders, Schools and Employment agencies continually ask us to engage with young people.

As a group we identified the need to improve our knowledge and skills so we can be more effective when working with young people in our Ranger and Landcare programs. Following a day of skill development, we discussed what is needed to work more effectively with young people. We identified obstacles and assessed our available strengths and resources.

Following the motto "Lead by example. Passion follows passion." we produced a document to help inform planners, funders and managers to better understand the resources necessary for effective engagement of young people in our region. Thanks again to QWaLC for the opportunity to hold this event in our community.

**Lead by example.
Passion follows passion.**



Holy Spirit college Cooktown Wetland rehabilitation landcare project.

REGIONAL REPORTS FROM THE BOARD

Tired of finding highly invasive weeds and weeds of national significance (WONS) in local Mount Isa gardens, I wrote letters to our local Natural Resource Management Bodies (Southern Gulf NRM and Northern Gulf NRM), Mount Isa City Council, and Mount Isa Water Board to propose an awareness raising campaign to inform the general public about problem plants that may be found in the urban area. With sponsorship support Mount Isa Landcare Group then provided the leadership and organised two awareness raising initiatives.



Firstly, on September 23rd, at Mount Isa Civic Centre, we held the Mount Isa Landcare Forum where:

- Nathan March from Queensland Biosecurity spoke about his work with “prickle bushes”;
- Melinda Laidlaw from the Queensland Herbarium gave a weed identification presentation;
- we had a line-up of seven speakers representing all the NRM Bodies; and
- we were honoured to have Geoff Elliott the Chair of Queensland Water and Land Carers (QWaLC), our major sponsor, attend.

Our second achievement of the awareness raising campaign was the creation of the Mount Isa Landcare Booklet – ‘Community Caring for Our Bushland’. The primary motivation was to raise awareness amongst the general public about the major WONS and highly invasive plants in Mount Isa gardens and the surrounding region. Our goal with the booklet was to create a ‘keep sake’ using beautiful photos, paper and layout. We included articles about Cultural Heritage, Waste Management and Camping Protocols. The text pages were compiled with much consultation and clearly state the ‘do’s’ and ‘don’ts’ in caring for our bushland.

In my role as a QWaLC Director I have attended two face-to-face meetings to represent Northern and Southern Gulf. These meetings were the QWaLC AGM held in Brisbane in November 2017 and a General Meeting in Cairns in June of 2018. On behalf of the QWaLC Board, I Chaired a Sub-Committee to review the operation of the “Green Nomad Program”. As I move about the regions that I represent to attend meetings or give presentations on landcare, I promote (wherever possible) the benefits that groups experience when they are members of QWaLC as well as the work that QWaLC does advocating on behalf of all NRM volunteers across the State.



SOUTHERN & NORTHERN GULF MARK VAN RYT



At the grass roots level, I am heavily involved in organising activities for three QWaLC member groups in the local area – Mount Isa Landcare, Gregory River Landcare and the Mount Isa Fish Stocking Group. The list of activities through the year are summarised below.

2017/18 Mount Isa and Gregory Landcare

July 22	Gorge Creek rubber vine (Mark & Falcon)
July 29	Gorge Creek – (Chad, Tania, Paul, Mark, Falcon & Georgia)
August 6	Rifle Creek Cactus – 9 people – 110 litres
August 13	Bunnings Sausage Sizzle – Fund Raiser
August 15	Gorge Creek rubber vine – (Chad, Vanesa, Falcon & Mark)
August 22	Ruth Pearl Cactus – (Joe & Mark) – 12 litres
September 3	Bunnings Sausage Sizzle – Fund Raiser
September 16	East Leichhardt Dam - Cleaned up six kilometres – three trailer loads
September 23	NRM Forum – Weed Identification & Landcare
September 30	Gregory River Rubber Vine Attack – 11 litres
October 2	Gregory River Rubber Vine Attack – 11 litres
October 16	Delta Cactus (Mark, Joe and his daughters)
November 10	Gorge Creek (Joe, Paul, Charles, Mark, Pedro & Suzanne) – 18 litres
November 12	Junction rubber vine and belly ache with the Mount Isa Scouts
November 19	Gorge Creek rubber vine (Jesse, Paul, Charles & Mark) – 18 litres
November 21	Distribute Cochineal nymph at Spear Creek and Rifle Creek
November 24	QWaLC - AGM in Brisbane
December 12	Gorge Creek rubber vine (Jesse, Charles, Mark and Bluey) – 18 litres
February 24	Clean up at Rosebud and Greens Creek belly ache bush
March 2	Clean up on Telstra Hill
March 3	Mount Isa Landcare Group AGM
March 17 & 18	Gorge Creek attack rubber vine with fire
April 18	Presentation at Gulf Weed and Pest Task Force
May 2 & 3	Burketown State School Fishing & Health Foods Gardens
May 4	Gregory River Landcare AGM – Gregory Downs Hotel
May 5	Table - Gregory Landcare Show bags at Canoe Race Registration
May 6	Support Gregory Canoe Race
June 12, 13 & 14	QWaLC Meeting in Cairns
June 15 & 16	Julia Creek and Cloncurry Junior Angler Education
June 22 & 23	Mount Isa Show Landcare Display

I would like to acknowledge the support and patience of my wife Natalia which allows me to give the time I do to NRM.

REGIONAL REPORTS FROM THE BOARD

I represent the Queensland Dessert Channels group, stationed in Longreach Queensland. As this is my first introduction to members via the Annual Report, I would like to share a little of how I came to the role and my background.

For 30 years I lived on a property called Stockholm, 36ks from Muttaborra, in Central Western Queensland. My husband Bill died 18 years ago and I stayed on to manage the property. On 20th April we sold Stockholm and I now live at the Sunshine Coast.

I was very fortunate to receive a grant, early 2017, that supplied pellets to poison Prickly acacia, through The Upper Thomson Landcare group. The Clover Hills Cluster group has been active and successfully participated in raising funding for cluster fencing.

I joined QWaLC in May 2018 and attended my first Board meeting in Cairns in mid-June where I met the other board members. I am enjoying my role with QWaLC and, in keeping with my role with QWaLC and my heritage, I would particularly like to keep contact with groups from the west and assist them in any way possible.



DESERT CHANNELS ANN BALLINGER

One of the main environmental problems that landholders face is the spread of woody weeds, prickly acacia, rubber vine, coral cactus, mother of millions and bellyache bush.

Particularly during good summer rains, these plants have the ability to spread very rapidly not only down creek systems, all the way to Lake Eyre, but onto the open Mitchell Grass downs country, which of course Western Queensland is famous for.

Feral animals, e.g. pigs, cause havoc seasonally, with the destruction of fences, killing lambs, polluting water holes and spreading disease. Most of these plants/pests have been introduced and Landholders having pride in their environmental record and caring for their land, look to groups like Landcare for 'a hand up' to aid in their eradication.



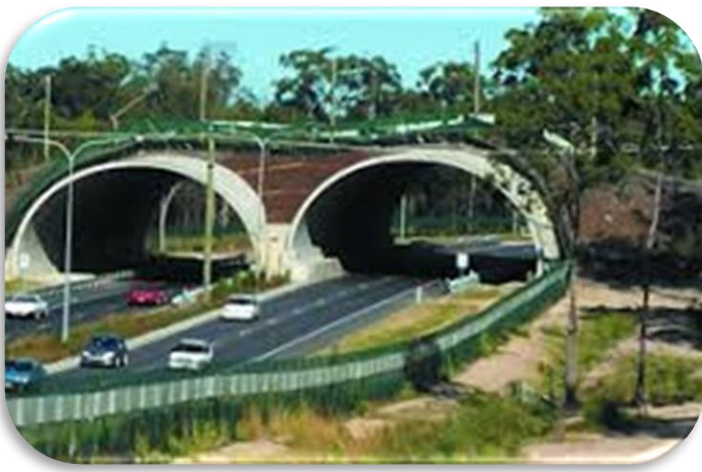
REGIONAL REPORTS FROM THE BOARD

I am pleased to have been selected to fill the casual board vacancy for South East Queensland. By way of introduction I am President of Cubberla Witton Catchment Network (one of the creek based ICM committees in Brisbane) and the Vice President of Brisbane Catchments Network (BCN) the umbrella group for all 11 creek catchment committees in Brisbane. In BCN we say 'community is what we are about, with most member groups being largely volunteer based'.

Before retirement I worked in the Queensland public service involved in the Decade of Landcare, the development of Integrated Catchment Management (ICM) in Queensland, the support of community based NRM through the Natural Heritage Trust, and the early moves to Regional NRM arrangements under the Commonwealth's National Action Plan for Salinity and Water Quality. In these few weeks of my Board membership, I have had chance to meet and work with a number of Brisbane based or nearby QWaLC member organisations.

The South East Region is home to 40 percent of QWaLC member organisations, who are active in the urban areas, in the coastal zones and nearby islands as well as the rural areas stretching west to the Great Dividing Range. Although this region by area is only two percent of the State it contains over 70 percent of the population. Thus, the region has its own unique issues, opportunities and challenges for the health of community natural resources management organisations and volunteers. Successes have been numerous and disparate over the year, including many revegetation projects, natural vegetation rehabilitation and improving biodiversity values in addition to creating corridors and strengthening fauna connectivity. Although difficult to single one out, an impressive example might be the Compton Road land bridge where government, industry, academia and the community have combined to provide, measure and monitor the movement of fauna on this eco-infrastructure.

Photo below courtesy of Prof D N Jones



Clean Up on Mud Island – photo below courtesy of Ocean Crusaders

In the marine and intertidal zones Coastcare type organisations like Ocean Connect Inc. have been active in the marine debris education space over the past year, reaching at least 5000 students from all over Queensland to raise awareness of this issue through talks and art activities. They are planning re-establishing our citizen science work on mangroves as well as rocky shores on the Gold Coast. More tangible is the regular marine and intertidal zone clean ups conducted by a number of groups. These are endeavouring to address the threats of plastics pollution in the marine environment.



Signing a Contribution Agreement - photo courtesy of Jim Dale

SOUTH EAST QUEENSLAND BRIAN VENZ



In the urban communities, the concept of Landcare is still growing albeit in a climate of reduced funding. These communities are looking to undertake stewardship actions to care for and manage the land, which is often not readily accessible or available to them.

At Milton Community Garden one of the main drivers was to build a space where current generations can learn to grow and harvest food – a skill that has been lost over successive generations. Many of the members have children at the adjoining Milton State School and are keen to learn how to grow and harvest food, care for soil and then pass this knowledge on to their children.

With positive interplay between community and business, The Milton Community Garden enables small businesses to

become stewards of sustainable practices with local restaurants contributing their organic waste for composting. Other urban groups continue with local waterway planting and weeding, and connect with local Councils through initiatives such as National Tree Day. Men of the Trees Qld Inc has been operating since 1980, undertaking on-ground tree planting and tending activities most Saturday mornings.

Outside the 'urban footprint' are the productive agricultural zones in the Noosa, Maroochy, Bremer, Brisbane and Lockyer Catchments. In these areas we find the full suite of traditional Landcare activities, with perhaps most efforts targeting creek bank erosion and weed control. Perhaps the most encouraging sign that Landcare and ICM practices are being recognised as contributing to the Eco services that support the local population in SEQ is Seqwater's Source Protection Partnerships Program. Seqwater is the State's dam manager and bulk raw water supplier to the SEQ grid. In this program Contribution Agreements with established local organisations deliver riparian works that will contribute to better water quality, minimise soil loss, and reduce the repair bills for water infrastructure damaged by flooding events. These agreements range in length from two to five years.

So far Seqwater has contributed nearly \$2.2M. Each group prepares an annual work plan based on their particular situation. The common thread is the ability of the local organisations to engage with and build relationships with landowners on whose properties most of the monies are spent. If the local group is able to leverage more funding for similar works, then so much the better. Key features of this program are both the certainty of funding, and the maturity of the relationships between the Company and its partners i.e. an offsets initiative where waste water treatment companies could invest in stream protection works that could significantly reduce sediment loss (and thus downstream water quality) as a cheaper option than building expensive new treatment infrastructure to comply with new regulatory discharge standards. Projects have involved channel reshaping and pole field construction (to reduce outer bank scour during flooding) and toe hardening, all accompanied by tree and sedge plantings and/or fencing/off stream watering points.

In summary, it is apparent that the work of Landcare still continues in the face of overall declining funding, due to the strong commitment of local affiliated groups. Local governments are becoming a very important source of funds.



REGIONAL REPORTS FROM THE BOARD

I am honoured to once again be representing the thousands of Wet Tropics volunteers out there on the ground doing practical conservation work with the land, waters and all the creatures who live therein.

The Wet Tropics is an expansive area of some 2.2 million hectares, a place of great beauty with arguably the world's greatest ecological diversity. It is the only region to boast two contrasting World Heritage Areas side by side - the Wet Tropical rainforests and the Great Barrier Reef. The Wet Tropics World Heritage area is the oldest rainforest on earth and contains Australia's greatest diversity of animals and plants within just 2.6% of the landmass. The Wet Tropics rainforests are a living museum of plants and animals, of ancient and rare flora and fauna, including numerous endemic birds and animals like the Cassowary and Tree Kangaroo that evolved here in the rainforests over millennia.

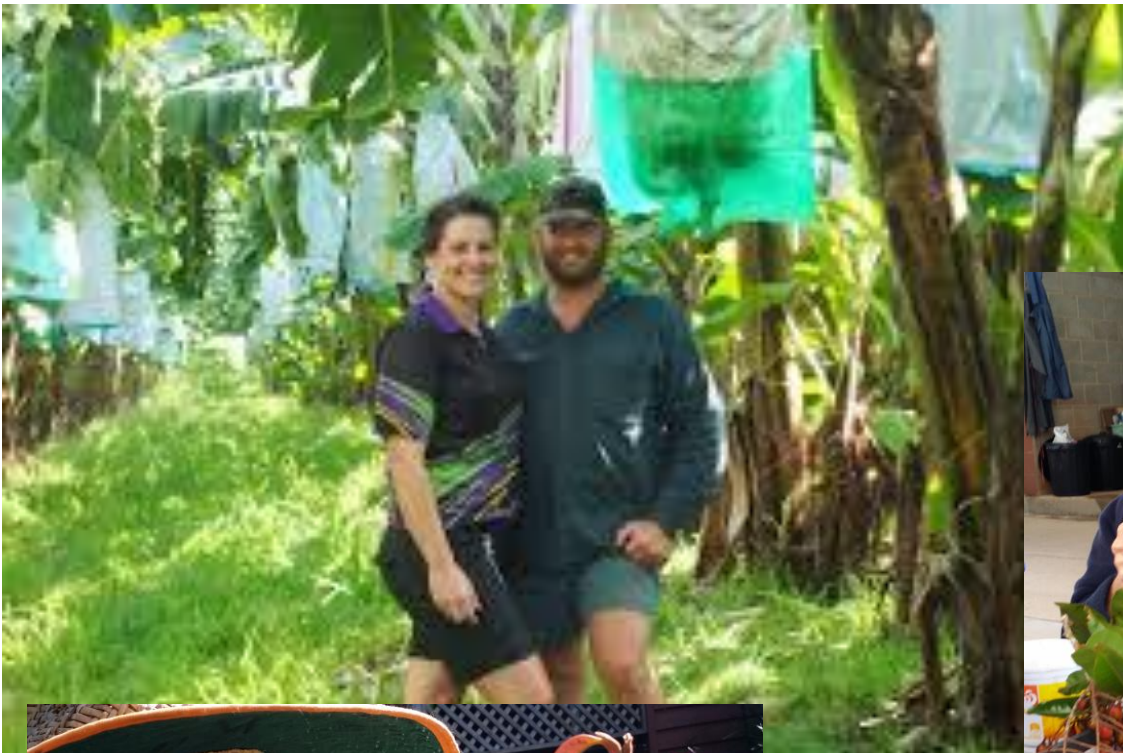
The Wet Tropics area extends from the Bloomfield River in the north, to Mossman, Cairns, Innisfail, Mission Beach, Tully and south to Ingham. It includes the Atherton Tablelands and continues west to Mount Garnet. It has 9 river catchments which all flow a relatively short distance to the Great Barrier Reef. The area supports a population of over 250,000, is home to a rich and enduring Aboriginal cultural heritage, with at least 22 Traditional Owner groups made up of more than 20,000 Rainforest Aboriginal people.

The number of QWaLC member groups in this area has been steadily rising, and the 45 current members are an interesting, hardworking and passionate bunch of people. The QWaLC Board met in Cairns in June this year, and we were pleased to host 14 of the groups at an information session to show the Board what they do, often under unusually trying conditions. The Board was particularly struck by the resilience of groups who had to replant whole revegetation plots that were wiped out by cyclones. They enjoyed hearing about riparian earthworks, massive tree corridor plantings, yellow crazy ants, dung beetles, sustainable farming practices, reef water quality improvement, the dedication of wildlife carers, and the indigenous groups out there doing voluntary NRM work on country.



This year, QWaLC has strengthened its partnerships with the Regional NRM Bodies. In line with this, we have signed an MoU with Terrain, the Wet Tropics Regional NRM Group. To create a direct link for our member groups, QWaLC has become a member of Terrain which allows us to become more actively involved and secures voting rights at the AGM. QWaLC has continuing involvement in the Wet Tropics Healthy Waterways Partnership Meetings.

WET TROPICS RHONDA SORENSEN



CEO Darryl Ebenezer and I have been working together the Wet Tropics World Heritage Management Authority (WTMA), and the regional body Arts Nexus, towards development of an Eco / Arts Authentic Experiences Project to promote authentic community-based experiences to disperse tourists across the region by connecting them with arts, culture, land, sea and rainforest. The Authority, Arts Nexus and QWaLC are developing an MoU to align efforts to nurture emerging nature based, arts, culture and indigenous micro business with visitor and eco-cultural tourism interests.

WTMA Cassowary Awards were held at Tjapukai Aboriginal Cultural Park on Saturday 10 March 2018. It was great to see many QWaLC member groups receive recognition for their contributions to the health of our environment and raising the awareness of the need for everybody to be involved. Queensland Minister for the Environment and the Great Barrier Reef Leanne Enoch congratulated all Awards recipients and nominees. She was pleased to learn that QWaLC provides insurance, advocacy and training for many of these, through funds generously supplied by the State Government.

A big congratulations and thanks to all of those amazing community environmental volunteers out there in the Wet Tropics area. Through my previous QWaLC involvement, I am familiar with many of you, and I hope to meet many more in the coming years. My aim is to help you do the things that result in healthy and resilient ecosystems and communities in the Wet Tropics.

REGIONAL REPORTS FROM THE BOARD

This year for the South West Region, what can I say, we are entering our 7th year of drought.

Drought on its own causes immense pressures on our fragile landscape as well as our animals and, being predominately a grazing area, this means Graziers/Land Managers have to work twice as hard to manage keeping not only our cattle/sheep/goats alive but of course also our native animals and our landscape.

The new Vegetation Management Laws have severely hampered land manager's ability to thin the Mulga Trees which can be a massive problem if not properly controlled. Graziers are reporting wide spread increase of the choking out of mature habitat trees due to the thickening of the Mulga and the dying of what little native grasses are trying to grow after the infrequent isolated storms.

Native animals are suffering due to the decrease in ground cover and the loss of their habitats and generally land managers are worried about the impact erosion will have *when* it does rain as there is little or no ground cover to help slow the effects of storm water. The ability of landholders to address these issues is now largely out of their hands and we rely on ongoing discussions with the government (*i.e. the visit from Dale Last, member for Burdekin, who came to see firsthand the effect the veg laws will have on the mulga landscape*) to address these specific concerns.



Examples of the effects of Mulga thickening.



Compared to what can be achieved if Graziers are left to work the land in a sustainable manner.

SOUTH WEST SCOTT SARGOOD



Members of The Evening Star Landcare Group, based in Charleville are shown below undertaking property field visits for tourists to the area to showcase firsthand what good landscape management of the Mulga lands is, as well as showing examples of what our region will look like under the new vegetation laws. The education of visitors and government is a vital if we are to continue to effectively care for our land.



Quote: Carmel Hawkins of Minden Qld

"We are so glad we came along for this presentation and discussion about the mulga trees, we had heard of all these vegetation laws on the news but we had no idea how damaging the vegetation laws would be to our food producers and land stewards..."



Our Billboard programme is proving to be very successful. Murweh Shire Council has provided bins at the turn off of the Morven sign due to the number of people stopping to read the sign and the Toompine sign is also proving to be a success. Plans are still moving forward to place signage at different locations all over the region as well as in other areas of the State.

Let's hope 2019 provides a lot of general relief rain and a return of common sense in the approach to vegetation management in the mulga areas.

REGIONAL REPORTS FROM THE BOARD



*left – the Hall SS
Environmental Fair – fishing
for Tilapia*

*below - Fig Tree Creek
Mangrove Awareness Day –
Shelly McArdle*



FITZROY MICHELLE HANRAHAN



Queensland Water and Land Carers (QWaLC) continue to deliver valued services throughout our region through the provision of insurance for our volunteers, links with a strong landcare network throughout the state and on occasion funding for specific projects. Our region values the contribution QWaLC makes on a regional, state and federal scale through its advocacy, lobbying, support, education and funding.

QWaLC through its association with organisations and Landcare Groups such as Capricornia Catchments, Baralaba Landcare, Cap Coast Landcare, Wycarbah & District Landcare, Gen Yadaba and many more, continues to support major events across the Fitzroy area. These events included Ecofest in Gladstone, St Lawrence Wetland Day, rural shows such as The Caves, Ridgeland and Mount Larcom. QWaLC also sponsored a breakfast for Landcarers at this year's Beef Australia 2018.

At this point last year, I mentioned how we in this region were still grappling with the after-effects of flooding & associated damage caused by TC Debbie & TC Marcia. (In fact, two of our region's major connecting roads – one on the Sarina Range which is part of the Marlborough – Sarina Road – and the other at Yeppoon on the Scenic Highway have only just been re-opened in the last month.) Now I make note that the prolonged dry has seen some of the Fitzroy region join the majority of our state and become drought declared.

This progression of Natural Disasters has made for difficult times in the lives, businesses, volunteering and efforts of our region's Landcarers.

This is the final year of my term on the QWaLC board and I have found the experience was a rewarding one. QWaLC is an organisation that truly respects the need for, and advocates on behalf of, volunteer landcare organisations and the like.

The interactions with other Board Members have been invaluable. The two people who have been in the position of Chair during my term are to be congratulated. Previously Rhondda Alexander and currently Geoff Elliot, have both guided QWaLC to become an organisation that continues to evolve, engage with & earn respect from all levels of government and the wider community; all the while increasing our membership numbers and keeping costs down.

Thanks to the Fitzroy region for allowing me this opportunity and to Darryl Ebenezer and his staff for their efforts and (at times) patience.

below – Fitzroy River below Yaamba



REGIONAL REPORTS FROM THE BOARD

The financial year 2017-2018 has been challenging for groups not only in the Burnett Mary region, but over all of Queensland. Our Annual survey is a great way for groups to provide feedback on issues that are of concern to groups. Funding [*or lack of it*] is a fairly constant theme for groups.

Another issue that groups feel would help is the ability to employ a coordinator, even in a part time role. Groups have stated that a Coordinator can help to apply for grants when they become available, an onerous task for volunteers. To this end QWaLC has made representations to Government requesting that Queensland be brought into line with the southern states who already have paid coordinators.

Groups are pleased to be able to get insurance cover via QWaLC and this allows smaller groups in particular to be able to organise events that they could not otherwise undertake.

Sitting on QWaLC's Insurance Subcommittee I would ask all groups to make sure you register the names of people attending any of your events. You should all also go to the following link to be aware of which activities are covered:
<http://qwalc.org.au/qwalc-insurance/insurance-faq/>

NDLG staff - photo by - Rachel Lyons

QWaLC's Chair will give you an update on 'merger' talks between Landcare Australia and the National Landcare Network. My role in this process is as a member of the National Landcare Network Members Council. I believe that it would be ideal to have one strong voice advocating for Landcare, and one that is representative of the Landcare movement.

As I write, this allocation of NLP funds via Regional Bodies is still undecided. I have held meetings with the Board and senior staff from the Burnett-Mary Regional Group who are working hard to ensure that groups in our region are consulted and involved in activities that will come out of this next round of funding. I have tried to meet with groups, where possible, in the region. I am always happy to discuss issues and talk with groups in the region. This is an invitation to get in touch. QWaLC is the peak body for 'Landcare' in Queensland and we will endeavour to represent groups at both the State and Federal level. We cannot change policy, but we can try too!

Our own group, Noosa & District Landcare Group [NDLG] celebrated the completion of a 20 million tree project in partnership with CO2 Australia and Queensland Parks & Wildlife Service, planting 340,000 trees – celebration photo below:



**BURNETT
PHILLIP MORAN**



Below: Sheila Charlesworth CEO of BMRG at the Gympie Round Table - photo by - Dean Collins



Above: Ian McKay Chair of Mary River Catchment Coordinating Committee and Peter Stevens, President of Lake Baroon - photo by - Dean Collins BMRG

REGIONAL REPORTS FROM THE BOARD



For me this last year has been an interesting mix of QWaLC and local Landcare responsibilities combined with grass roots involvement in the activities of the region's member groups and other environmentally focused organisations in this region. I have very much enjoyed the opportunities to promote and support nature within productive landscapes during the year.

As the QWaLC Board Member for the Burdekin and the Mackay & Whitsunday regions I have participated in all QWaLC Board Meetings and the Annual General Meeting where I was appointed to the position of QWaLC's Treasurer. I was also able to represent QWaLC at the Australian Coastal Conference held at Airlie Beach. I have also maintained contact with the Regional Landcare Facilitators in the Burdekin and Mackay/Whitsunday Area.

These facilitators work hard to assist the various Landcare Groups and provide opportunities for involvement and input into their activity program planning and implementation. For example, as Chair of Whitsunday Catchment Landcare, I sit on the Landcare Facilitator's Advisory Group for the Mackay/Whitsunday region. These meetings also provide opportunity to interact with members from Sarina and Pioneer Catchment Landcare Groups.

Landcare groups in this region also benefit from a close working relationship with the two NRM Groups, Reef Catchments and NQ Dry Tropics (NQDT). At a personal level this has led to my participation in a range of education, promotion and research activities, often in my main area of interest – maintaining biodiversity in a productive landscape.

Examples of this are:

- Completing 3 years of bird diversity monitoring on a cattle property for an NQDT project during a successful holistic grazing trial.
- Attending Grazing and Soil Health Field Days run by NQDT
- Participating in the exchange of ideas between Lower Burdekin and Whitsunday Landcare on establishing and running a bush care nursery - a face-to-face initiative facilitated by NQDT.

This is in addition to my regular and ongoing participation in the activities of Whitsunday Catchment Landcare which includes attendance at management committee and general meetings and participation in the various tree planting, system regeneration, and nursery related activities and events. Community education and capacity building in natural resource management is also an important activity which saw me staffing a joint display of Whitsunday Catchment Landcare and Whitsunday Regional Council on Weeds and Feral Animals at the Proserpine Show also in June. Support from local businesses is also a key success factor for our local Landcare group.

BURDEKIN/MACKAY WHITSUNDAY GRAHAM ARMSTRONG



At a grass roots level, I have also been expanding my interaction with other organisations lending support through, for example:

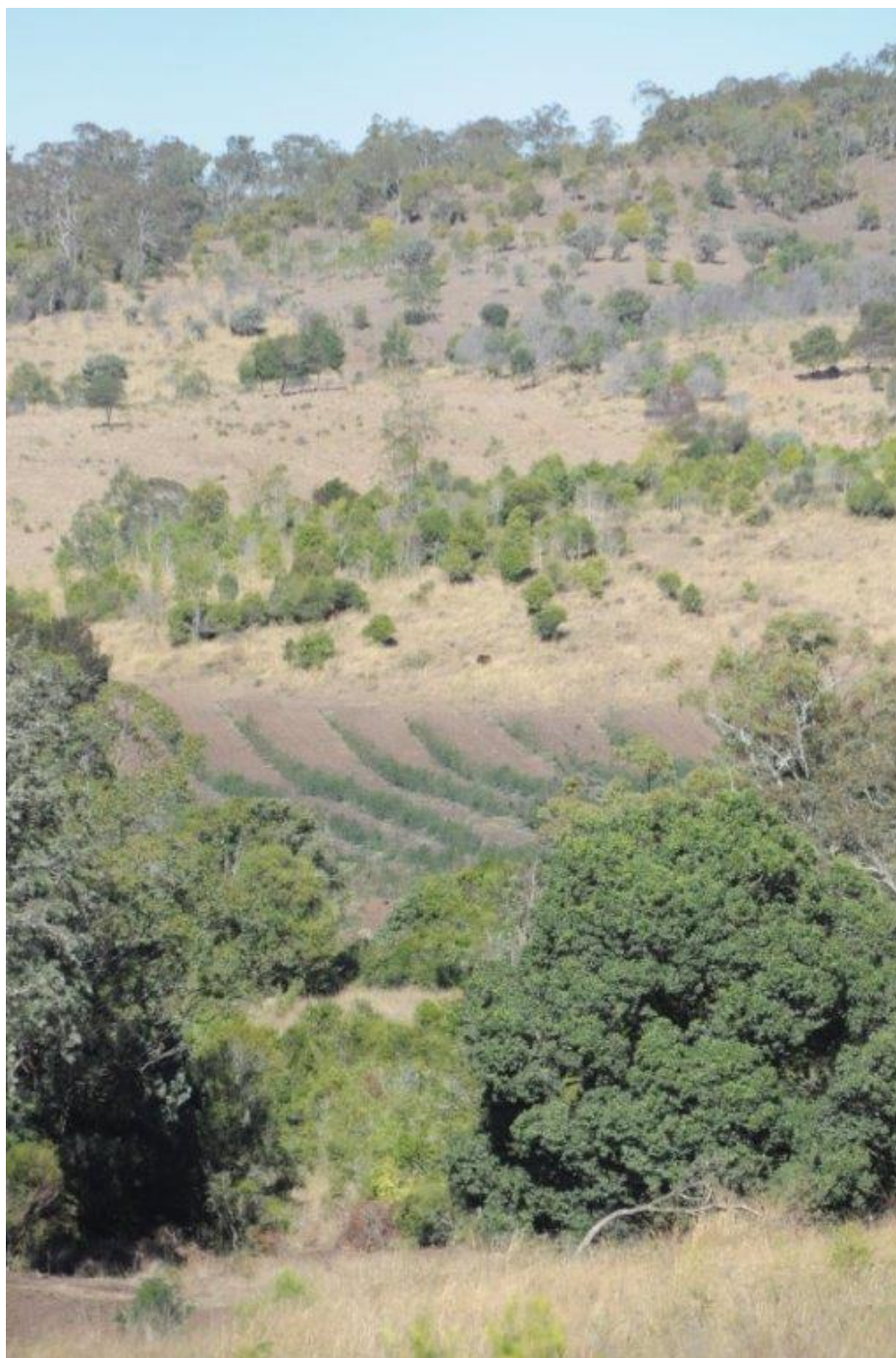
- Acting as a bird guide during the inaugural Eungella Bird Week in August – an initiative of Wild Mob and actively supported by Birdlife Mackay and Mackay Regional Council.
- Participation in a weed removal program to protect valuable island turtle nesting sites in the Whitsundays, another program of Wild Mob which has, as its primary focus, the preservation of Island ecosystems.
- Acting as an animal rescuer on behalf of Whitsunday Fauna Rescue throughout the year.

During the past year there has been no shortage of challenges to respond to or opportunities to promote and/or become involved in the numerous field days and community educational activities being held by NRM organisations, regional Landcare Groups and other environmental and land management groups. Whilst we all do what we can in our region it is always greatly appreciated by member groups when QWaLC's CEO Darryl Ebenezer is able to visit the region in person as was the case in April. Local groups have expressed appreciation for the provision of updates on the State-wide picture and for the encouragement received knowing that our collective interests and concerns are being presented to government by QWaLC.

During the year three groups in the region gave notice that they had ceased their activities. The future continues to be challenging for community groups with those that receive strong Regional Council support in addition to support from the Regional NRM Bodies being the most active and effective in tackling local issues. Most community groups remain highly committed and ready to respond to the challenges that arise and I look forward to participating and assisting wherever I am able in the year ahead.



REGIONAL REPORTS FROM THE BOARD



The year started off with the Darling Downs Regional Landcare meeting at Allora hosted by the Allora Landcare Group. Over the year we have had four meetings with a range of member groups. These meetings allow groups to catch up and discuss current issues, share activities that have happened and future events. These meetings enable me as the QWaLC representative to listen, inform and support my role for the region.

Our major event for Landcare was the Forum held at Dalby including Queensland Murray Darling and South West. There were 46 attendees ranging from landcare, landholders, council, environment and general community. QWaLC Geoff Elliot opened the proceedings. The programme covered Regional Groups' activities and operations; 'Show and Share' where groups nominated to share with the forum their activities and

accomplishments and how they are faring in today's environment; Weed and Pest Management, Right Pastures for Soil and Vegetation Management & Fodder trees. This great day was resourced by QWaLC and well received by the regions. I would like to thank the organising committee (whom I 'encouraged' to join me) Geoff Elliot, Scott Sargood, Glenys Bowtell, Ashley Volz, Graham Cooke, Rebecca Perrin and Roxane Blackley.

On the 20th of October I attended the 15th Annual General Meeting of Condamine Alliance. With partnerships including Landcare, Landholders, Environmental Groups, Contractors and general community they were able to achieve in 2017/2018 – 188285 hectares of land improved, \$2.9 million invested on our region's natural resource management programs, 1413 landholders engaged across 48 events, 100% project delivery and reporting on time and in full, a strong financial position.

My greatest challenge was the coordination of the 2017 State Landcare Awards. The sub group of QWaLC – Members Engagement Committee did a great job with the direction and experience of Executive Officer Darryl Ebenezer and Lane Pilon (administration support). The event ran efficiently, and the nominees were of a high calibre. The following were nominated from the Condamine Region:

- Oakey Urban Landcare Group;
- Ashley Volz won Young Landcare Leader Award - now in the running for 2018 National Landcare Awards;
- Lindsay & Joanne Evans;
- Fred Ruhle; and
- David Vonhoff runner up for Individual Landcarer Award.

Congratulations to all of the nominees, especially for the great work you do.

CONDAMINE MARYLOU GITTINS



I would like to take this opportunity to encourage groups and individuals to think about nominating for the 2019 Qld State Landcare Awards - it is a great experience.

Earlier in 2018 the 3 regional bodies Condamine alliance, Qld Murray-Darling Committee and South West Queensland Natural Resource Management developed a proposal for new arrangement for the three areas. The process was rushed due to State funding pressures. There has been the formation of Southern Queensland Natural Resource Management. The dust has not settled yet. It has not been an easy path for the community due to lack of information and consultation. Hopefully this new groups will be supportive of landcare in the regions.

In February I was invited to Households Options to Protect the Environment to discuss QWalC role and how we operate. It was a great meeting I thank Frank and Mary Ondrus for their hospitality.

I attended a few field days this current year. In March we had a field day on our own farm from a project we were involved in with Condamine Catchment Management Association with two other farmers which looked at improved pastures. A fun fact we recorded was out of those present there were more than 1800 Ha of improved pasture on farms.

I also attended the Drayton Erosion and Flood Mitigation Field Day well organised by Toowoomba Landcare Group April saw the dawning of the Weed Workshop at Allora Expo which I worked with Allora Landcare on behalf of CCMA. The day showed the latest innovations and technological developments in weed and pest management. More than 80 people came along to the Allora Showgrounds including students from Allora State High School.

Landcare in the Condamine region has had a very busy year. I have enjoyed interacting with our members and look forward to another eventful year.



REGIONAL REPORTS FROM THE BOARD

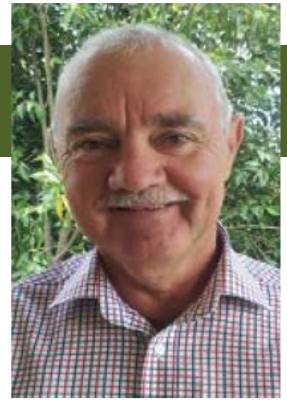


Above and right - Cattle and Cropping field day with holistic trainer Helen Lewis.



Left - 1 of 3 farm bus tours with 60 people each day looking at exclusion fencing, organic wheat, vegetation fencing, off stream water points, integrating dual systems into same paddock (i.e. Olive plantations and sheep and free

QUEENSLAND MURRAY DARLING GEOFF ELLIOT



This year hasn't varied greatly from previous years. Landcare Groups within the QMD region are still struggling financially. Unfortunately, a couple of the groups have had to suspend operations pending funding sources being found. Groups are however to be commended on the projects that have been achieved over the last 12 months, some of which are detailed below:

Waggamba Landcare

- Have been active throughout the last 12 months although more recently their coordinator has resigned and due to financial restraints this position has not been replaced.

Murilla Landcare Association

- Delivery of numerous workshops to local land managers including the topics of: On-Farm Biosecurity, the Use of Drones in Agriculture, Climate Forecasting, Cattle Nutrition & Drought feeding management, Herd Management and Grant Writing Workshops
- An Anti-Litter artwork competition involving local High School students
- Groundwater Net program - a Water Bore landholder based monitoring and recording program of artesian bore pressures and sub-artesian bore water levels.
- Community Sustainability Action Program Project & funding with a focus on Biodiversity Conservation of the Caliguel Reserve and Lagoon
- Harrisia Cactus control program in the Jackson district working alongside local landholders and Council.
- Compost trial project with selected local landholders.

Millmerran Landcare

- Sub catchment planning with Dunmore group (approx. 20 landholders involved) and Upper Canning group (10 landholders). Main issues are gully erosion, Boxthorn, Harrisia cactus, Treepear, mother of millions, night blooming cereus and native pine thickening.
- CSG Net groundwater level monitoring: not many landholders are measuring and reporting yet, so grants have been offered to cover costs of installing monitoring equipment.
- School activities: bush tucker gardens, recycling, energy and water efficiency grant through Community Sustainability Action grant. Landcare coordinator has made regular weekly visits to the school to maintain a presence. Plans are in place to develop a Junior Landcare group at both local schools.
- Moved office to the old post office building.
- Weed and pest projects field day with mulching demo and pig trap setup with remote access gate system. Traps are available for use by landholders. Also purchased cameras that are available to landholders.
- Field days held: Fireweed and Lippia, Pigs and Pests, Dunmore Weeds, Grant Writing workshop, Future of Cropping, Desmanthus field day, Biosecurity and Veg Laws, 2 lots of Native Bee workshops at local schools and community sessions.
- Litter Project- corporate clean-up day, Talking Rubbish posters and advertisements.

Inglewood and Texas Landcare Association

- A quiet year. Submitted several unsuccessful grant applications. The group meets to discuss future events but struggling due to lack of finances.
- Landholders continue to use the cameras and pig trapping system owned by the ITLA.



**QUEENSLAND WATER AND LAND CARERS INC.
Committee's Report**

Your committee members submit the financial report of Queensland Water and Land Carers Inc. for the financial year ended 30 June 2018.

Committee Members

The names of committee members throughout the year and at the date of this report are:

Graham Armstrong	Phillip Moran
Ann Ballinger	Scott Sargood
Jason Carroll	Rhonda Sorensen
Geoff Elliott	Peter Stevens
MaryLou Gittins	Mark Van Ryt
Michelle Hanrahan	Brian Venz

Principal Activities

The principal activities of the association during the financial year were to act as the peak body for the volunteer NRM groups (Landcare, Coastcare etc) in Queensland and to represent and advocate for these groups.

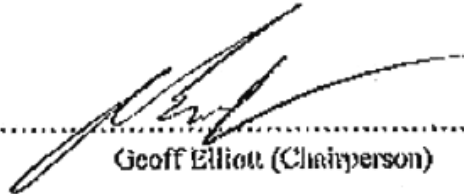
Significant Changes

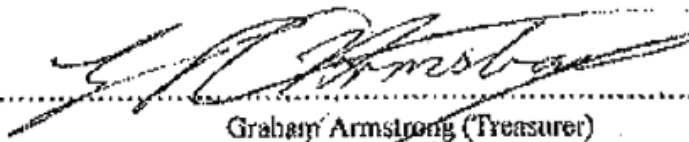
No significant change in the nature of these activities occurred during the year.

Operating Result

The deficit for the year amounted to \$266,148 (2017 surplus \$270,714). The significant disparity between the surplus/deficit over the two financial years is caused by the timing in receipt of Government funding.

Signed in accordance with a resolution of the members of the committee.


.....
Geoff Elliott (Chairperson)


.....
Graham Armstrong (Treasurer)

Dated this..... day of..... 2018

QUEENSLAND WATER AND LAND CARERS INC. Income and Expenditure Statement for the year ended 30 June 2018

	Note	2018 \$	2017 \$
INCOME			
Grants received	9	205,864	707,519
Interest		1,263	1,066
TOTAL INCOME		<u>207,127</u>	<u>708,585</u>
EXPENDITURE			
Audit Fees		2,200	2,200
Bad Debts Written Off		700	-
Bookkeeping		6,100	5,939
Computer Software & Expenses		2,162	3,781
Consultancy Fees		132,732	117,841
Donations & sponsorships		15,900	23,409
Depreciation Expense		900	217
Dues & Subscriptions		4,517	5,183
Honorariums		19,913	11,491
Insurance		46,130	57,447
Legal Fees		1,046	-
Meeting Expenses		2,616	2,080
Motor Vehicle Expenses		749	-
National Landcare Network Board Expenses		8,830	380
Projects - 'Health of Landcare in Queensland'		24,934	-
Projects - other		-	2,000
Promotion & Marketing		6,655	6,292
Rent		3,513	3,895
Stationery, Postage & Printing		3,729	2,367
Sundry Expenses		1,826	1
Superannuation		9,064	8,934
Telephone & Internet		4,772	3,716
Travel & Accommodation		81,188	85,220
Wages & Salaries		91,971	91,336
Website Maintenance		618	3,362
Workers' Compensation		510	780
TOTAL EXPENDITURE		<u>473,275</u>	<u>437,871</u>
NET CURRENT YEAR SURPLUS / (DEFICIT)		<u>- 266,148</u>	<u>270,714</u>

QUEENSLAND WATER AND LAND CARERS INC.

Assets and Liabilities Statement as at 30 June 2018

	Note	2018 \$	2017 \$
CURRENT ASSETS			
Cash and Cash Equivalents	2	146,112	168,248
Accounts Receivable and Other Debtors	3	7,022	289,520
Prepayments	4	35,146	34,270
TOTAL CURRENT ASSETS		188,280	492,038
NON-CURRENT ASSETS			
Vehicles, Furniture and Equipment	5	20,114	900
TOTAL NON-CURRENT ASSETS		20,114	900
TOTAL ASSETS		208,394	492,938
CURRENT LIABILITIES			
Provisions For Employee Entitlements	6	7,964	11,796
Trade and Other Payables	7	8,405	22,969
TOTAL CURRENT LIABILITIES		16,369	34,765
TOTAL LIABILITIES		16,369	34,765
NET ASSETS		192,025	458,173
MEMBERS' FUNDS			
Retained Earnings	8	192,025	458,173
TOTAL MEMBERS' FUNDS		192,025	458,173

QUEENSLAND WATER AND LAND CARERS INC. Notes to the financial statements for the year ended 30 June 2018

Note 1: Summary of Significant Accounting Policies

This financial statements are special purpose financial statements prepared in order to satisfy the financial reporting requirements of the Associations Incorporation Act Queensland. The committee has determined that the association is not a reporting entity.

The financial report has been prepared in accordance with Associations Incorporation Act Queensland, the basis of accounting specified by all Australian Accounting Standards and Interpretations, and the disclosure requirement of Accounting Standards AASB 101: Presentation of Financial Statements, AASB 108: Accounting Policies, Changes in Accounting Estimates and Errors, AASB: Materiality and AASB 1054: Australian Additional Disclosures.

The financial statements have been prepared on an accrual basis and are based on historic costs. They do not take into account changing money values or, except where specifically stated, current valuations of non-current assets.

The following significant accounting policies, which are consistent with the previous period unless otherwise stated, have been adopted in the preparation of this financial report.

a. **Income Tax**

No provision for income tax has been raised as the entity believes it is exempt from income tax under Division 50 of the Income Tax Assessment Act 1997.

b. **Vehicles, Furniture and Equipment**

All fixed assets are carried at cost less, where applicable, any accumulated depreciation.

The depreciable amount of all vehicles, furniture and equipment is depreciated over the useful lives of the assets to the association commencing from the time the asset is held ready for use.

Depreciation on furniture and equipment is being calculated via the diminishing value method at rates between 10 - 66.67%.

c. **Employee Provisions**

Provision is made for the association's liability for employee benefits arising from services rendered by employees to the end of the reporting period. Employee benefits, if any exist, have been measured at the amounts expected to be paid when the liability is settled.

d. **Cash and Cash Equivalents**

Cash and cash equivalents includes deposits held at call and credit cards held with banks.

e. **Revenue and Other Income**

Revenue is measured at the fair value of the consideration received or receivable after taking into account any trade discounts and volume rebates allowed. Revenue is recorded on receipt or banking, whichever occurs first.

Grant and donation income is recognised when the entity obtains control over the funds, which is generally at the time of receipt.

All revenue is stated net of the amount of goods and services tax (GST).

f. **Goods and Services Tax (GST)**

Revenues, expenses and assets are recognised net of the amount of GST, except where the amount of GST incurred is not recoverable from the Australian Taxation Office (ATO). Receivables and payables are stated inclusive of the amount of GST receivable or payable. The net amount of GST recoverable from, or payable to, the ATO is included with other receivables or payables in the assets and liabilities statement.

g. **Trade and Other Payables**

Trade and other payables represent the liability outstanding as the end of the reporting period for goods and services received by the association during the reporting period that remain unpaid. The balance is recognised as a current liability with the amounts normally paid with 30 days of recognition of the liability.

h. **Comparative Figures**

Where required by Accounting Standards comparative figures have been adjusted to conform with change in presentation for the current financial year.

i. **Economic Dependence**

A significant portion of income is received from the State of Queensland acting through the Department of Natural Resources, Mines and Energy. At the date of these financial statements, the committee members have no reason to believe this will change.

AUDITORS REPORT | FINANCIAL PERFORMANCE

QUEENSLAND WATER AND LAND CARERS INC. Notes to the financial statements for the year ended 30 June 2018

Note 2: Cash and Cash Equivalents	2018 \$	2017 \$
'ANZ business extra' bank account	29,486	10,577
'ANZ savings' bank account	117,329	161,066
'ANZ credit card account	-	3,395
	<u>146,112</u>	<u>168,248</u>

Note 3: Accounts Receivable and Other Debtors

Grant receivable	0	289,520
GST receivable	7,022	-
	<u>7,022</u>	<u>289,520</u>

Note 4: Prepayments

Prepaid insurance (for the period 31 March 2018 to 31 March 2019)	35,146	34,270
	<u>35,146</u>	<u>34,270</u>

Note 5: Vehicles, Furniture and Equipment

Computer equipment at cost	-	11,532
Less accumulated depreciation	-	11,516
	<u>-</u>	<u>16</u>

Office equipment at cost	-	4,222
Less accumulated depreciation	-	3,338
	<u>-</u>	<u>884</u>

Motor vehicle at cost	20,114	-
Less accumulated depreciation	-	-
	<u>20,114</u>	<u>-</u>

Website	-	30,014
Less accumulated depreciation	-	30,014
	<u>-</u>	<u>-</u>
	<u>20,114</u>	<u>900</u>

A motor vehicle was ordered and paid for on 29 June 2018. As delivery of the vehicle was not made until 6 July 2018, no depreciation has been claimed in the 2018 financial year.

Note 6: Provisions for Employee Entitlements

Provision for annual leave	7,964	11,796
	<u>7,964</u>	<u>11,796</u>

A provision for annual leave has been calculated based on the employee's annual leave accrual owing at 30 June 2018. The employee is entitled to four weeks annual leave accrual each year.

Note 7: Trade and Other Payables

GST payable	-	19,065
PAYG withholding payable	7,125	1,679
Superannuation payable	1,280	2,225
	<u>8,405</u>	<u>22,969</u>

AUDITORS REPORT | FINANCIAL PERFORMANCE

QUEENSLAND WATER AND LAND CARERS INC. Notes to the financial statements for the year ended 30 June 2018

	2018	2017
	\$	\$
Note 8: Retained Earnings		
Retained earnings at the beginning of the financial year	458,173	187,459
Net profit (loss) attributable to members of the association	- 266,148	270,714
Retained earnings at the end of the financial year	<u>192,025</u>	<u>458,173</u>
Note 9: Grants Received		
Dep. of Natural Resources, Mines and Energy - Funding agreement 2016/17	-	350,000
Dep. of Natural Resources, Mines and Energy - Funding agreement 2017/18	87,500	262,500
National Landcare Network	95,000	95,000
Miscellaneous	23,364	19
	<u>205,864</u>	<u>707,519</u>

The funding agreement for the 2017/18 financial year was signed on 16 June 2017. According to the agreement, the first milestone payment of \$262,500 GST exclusive was payable 'on receipt by the State of executed grant agreement'. This milestone was recorded as income in the prior year by way of Accounts Receivable.

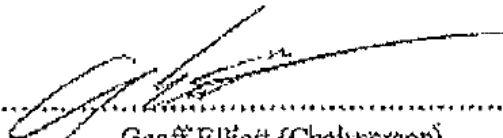
The funding agreement for the 2018/19 financial year was signed on 25 June 2018. According to the agreement, the first milestone payment of \$262,500 GST exclusive was payable 'on execution of this deed'. This milestone was recorded as income when it was received in July 2018 when the Association took control of the funds. This treatment is recommended in AASB 120: Accounting for Government Grants and Disclosure of Government Assistance.

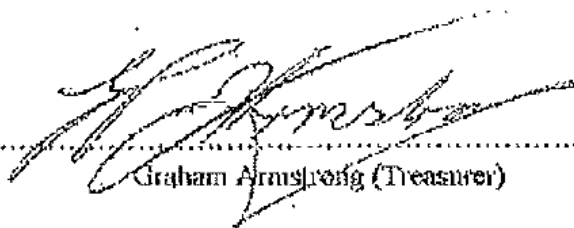
**QUEENSLAND WATER AND LAND CARERS INC.
STATEMENT BY MEMBERS OF THE COMMITTEE**

In accordance with a resolution of the committee of Queensland Water and Land Carers Inc, the members of the committee declare that:

- 1 the financial statements as set out on pages 2 to 6 present a true and fair view of the financial position of Queensland Water and Land Carers Inc as at 30 June 2018 and its performance for the year ended on that date in accordance with the accounting policies described in Note 1 to the financial statements and the requirements of the Associations Incorporation Act; and,
- 2 at the date of this statement, there are reasonable grounds to believe that Queensland Water and Land Carers Inc will be able to pay its debts as and when they fall due.

This statement is signed for and on behalf of the committee by:


.....
Geoff Elliott (Chairperson)


.....
Graham Armstrong (Treasurer)

Dated this 9th day of September 2018

Independent Auditor's Report to the Members of Queensland Water and Land Carers Inc

Report on the Audit of the Financial Report

Opinion

We have audited the financial report of Queensland Water and Land Carers, which comprises the assets and liabilities statement as at 30 June 2018, the income and expenditure statement for the year then ended, notes comprising a summary of significant accounting policies and other explanatory information, and the statement by the committee giving a true and fair view of the financial position and performance of the association.

In our opinion, the accompanying financial report presents fairly, in all material respects, the financial position of the association as at 30 June 2018 and its financial performance for the year then ended in accordance with the accounting policies described in Note 1 to the financial statements, and the requirements of the Associations Incorporation Act (Qld) 1981.

Basis for Opinion

We conducted our audit in accordance with Australian Auditing Standards. Our responsibilities under those standards are further described in the *Auditor's Responsibilities for the Audit of the Financial Report* section of our report. We are independent of the association in accordance with the ethical requirements of the Accounting Professional and Ethical Standards Board's APES 110: *Code of Ethics for Professional Accountants* (the Code) that are relevant to our audit of the financial report in Australia. We have also fulfilled our other ethical responsibilities in accordance with the Code.

We believe that the audit evidence we have obtained is sufficient and appropriate to provide a basis for our opinion.

Emphasis of Matter - Basis of Accounting

We draw attention to Note 1 to the financial report, which describes the basis of accounting. The financial report has been prepared to the association to meet the requirements of the Associations Incorporation Act (Qld) 1981. As a result, the financial report may not be suitable for another purpose. Our opinion is not modified in respect of this matter.

Responsibilities of the Committee for the Financial Report

The committee is responsible for the preparation and fair presentation of the financial report in accordance with the financial reporting requirements of the Associations Incorporation Act (Qld) 1981 and for such internal control as the committee determines is necessary to enable the preparation of a financial report that is free from material misstatement, whether due to fraud or error.

In preparing the financial report, the committee is responsible for assessing the association's ability to continue as a going concern, disclosing, as applicable, matters relating to going concern and using the going concern basis of accounting unless the committee either intends to liquidate the association or to cease operations, or has no realistic alternative but to do so.

Auditor's Responsibilities for the Audit of the Financial Report

Our objectives are to obtain reasonable assurance about whether the financial report as a whole is free from material misstatement, whether due to fraud or error, and to issue an auditor's report that includes our opinion. Reasonable assurance is a high level of assurance, but is not a guarantee that an audit conducted in accordance with the Australian Auditing Standards will always detect a material misstatement when it exists. Misstatements can arise from fraud or error and are considered material if, individually or in the aggregate, they could reasonably be expected to influence the economic decisions of users taken on the basis of this financial report.

As part of an audit in accordance with Australian Auditing Standards, we exercise professional judgement and maintain professional scepticism throughout the audit. We also:

- Identify and assess the risks of material misstatement of the financial report, whether due to fraud or error, design and perform audit procedures responsive to those risks, and obtain audit evidence that is sufficient and appropriate to provide a basis for our opinion. The risk of not detecting a material misstatement resulting from fraud is higher than for one resulting from error, as fraud may involve collusion, forgery, intentional omissions, misrepresentations, or the override of internal control.
- Obtain an understanding of internal control relevant to the audit in order to design audit procedures that are appropriate in the circumstances, but not for the purpose of expressing an opinion on the effectiveness or the association's internal control.
- Evaluate the appropriateness of accounting policies used and the reasonableness of accounting estimates and related disclosure made by the committee.
- Conclude on the appropriateness of the committee's use of the going concern basis of accounting and, based on the audit evidence obtained, whether a material uncertainty exists related to events or conditions that may cast significant doubt on the association's ability to continue as a going concern. If we conclude that a material uncertainty exists, we are required to draw attention in our auditor's report to the related disclosures in the financial report or, if such disclosures are inadequate, to modify our opinion. Our conclusions are based on the audit evidence obtained up to the date of our auditor's report. However, future events or conditions may cause the association to cease to continue as a going concern.

Independent Auditor's Report to the Members of Queensland Water and Land Carers Inc

Report on the Audit of the Financial Report (continued)

Auditor's Responsibilities for the Audit of the Financial Report (continued)

- Evaluate the overall presentation, structure and content of the financial report, including disclosures, and whether the financial report represents the underlying transactions and events in a manner that achieves fair presentation.
- Obtain sufficient appropriate audit evidence regarding the financial information of the entity to express an opinion on the financial report. We are responsible for the direction, supervision and performance of the audit. We remain solely responsible for our audit opinion.

We communicate with the committee regarding, among other matters, the planned scope and timing of the audit and significant audit findings, including any significant deficiencies in internal control that we identify during our audit.

DL Backman

.....
Deanna K Backman B.Comm C.P.A
John Gosper Audit and Assurance Pty Ltd
PO Box 2075, Toowoomba QLD 4350

Dated this *28th* day of *September* 2018

P eople we work with.



C ontact us:

Darryl Ebenezer
Executive Officer
Queensland Water and Land Carers (QWaLC)
E: darryl@qwalc.org.au
W: qwalc.org.au