



## **ANNUAL REPORT**

**2015-2016**



# Table of Contents

	Page
Who are we? .....	2
How do we operate? .....	2
What is our role? .....	3
Our People .....	4
Chair's Report .....	5
Executive Officer's Report .....	7
Treasurer's Report .....	8
<b>Regional Reports from the Board</b>	
Cape York Peninsular – Jason Carroll .....	9
Southern and Northern Gulf – Mark van Ryt .....	11
Wet Tropics – John Reghenzani .....	13
Fitzroy – Michelle Hanrahan .....	15
Burnett – Phillip Moran .....	17
Burdekin/Mackay Whitsunday – Graham Armstrong .....	19
South East Queensland – Bardhold Blecken.....	21
Queensland Murray Darling – Geoff Elliot.....	23
Queensland Murray Darling – Geoff Elliot.....	23
<b>Financial Performance</b>	
Auditor's Report .....	25
People we work with .....	31
Contact details .....	31

*Cover photo – Charles Curry of the Mount Isa Landcare Group winning the battle against belly ache bush on the Corella River.*



# Who are we?

Queensland Water and Land Carers Inc. (QWaLC) is the peak body for NRM volunteers in Queensland. We are an independent, non-government, not-for-profit organisation. QWaLC formed in April 2004 to fill an important need in supporting the valuable work of volunteer community groups in the Natural Resources Management sector across Queensland. We currently have a membership of over 300 groups with close to 30,000 individual members. We work on behalf of thousands of natural resource management volunteers across our vast state.



# How do we operate?

The organisation is answerable to our membership, which is made up of a broad range of volunteer NRM groups. Members include Landcare, Coastcare, Waterwatch, Bushcare, catchment associations, conservation groups regional bodies and subregional organisations.

The organisation is incorporated and governed by a constitution\* that sets out the objectives, powers and administrative arrangements.

QWaLC's network extends across the 14 NRM regions of Queensland, each of which is represented by a QWaLC Board Member elected from the regional groups. The Board Members participate on a board of management.

For QWaLCs constitution go to:

<http://QWaLC.org.au/wp-content/uploads/2015/07/2014.08.13.QWaLC-CONSTITUTION-Final.pdf>





## What is our role?

As Queensland's peak body for NRM volunteers, QWaLC fulfils the following roles:

**Networking**—QWaLC is part of a large NRM network that encompasses volunteer NRM groups, regional bodies, government representatives and industry personnel. We facilitate the exchange of strategies, information, skills and resources. We develop and improve links between volunteer NRM groups, regional organisations and government agencies.

**Promotion**—QWaLC is dedicated to promoting the achievements of natural resource management volunteers across the state.

**Representation**—A community representative board is a core pillar to the overall make up of QWaLC – and these members ensure that community volunteers have an opportunity to participate and contribute to policies and issues that specifically relate to their region at a localised level. It is the role of your Board members to ensure that they actively engage with member groups and bring forward their views and opinions to be represented at a State and National levels.

**Advocacy**—QWaLC exists in Queensland to advocate specifically on behalf of NRM volunteers. The volunteer NRM sector is vital to the Queensland economy, investing many thousands of hours of volunteer's time into practical environmental outcomes. QWaLC role is to ensure that this contribution is an important consideration in any decisions made regarding the voluntary NRM sector.

**Insurance**—QWaLC assists groups in their practical work throughout the state by the provision of three vital insurance policies - Association Liability; Public and Products Liability; and Volunteer Accident.

# Our people.

## QWaLC Board

QWaLC's Board plays an integral part of its role as the peak body for natural resource management (NRM) volunteers. The Board consists of a community representative from across each of Queensland's 14 NRM regions. Our Regional Board Members represent their regions and highlight the issues and achievements in each allowing QWaLC to be truly representative of the whole State and to keep in touch with on-ground volunteers.

## The Board (\*QWaLC Executive)

Region	Role	Name
Qld. Murray Darling	Chair	Geoff Elliot*
Southern/Northern Gulf	Deputy Chair	Mark van Ryt*
Wet Tropics	Treasurer	John Reghenzani*
South East Qld.	Secretary	Bardhold Blecken*
Burnett Mary	Board Member	Phil Moran
Cape York & Torres Strait	Board Member	Jason Carroll
Fitzroy	Board Member	Michelle McRae
Burdekin/Mackay Whitsunday	Board Member	Graham Armstrong
Desert Channels	<i>awaiting election</i>	-
Condamine	<i>awaiting election</i>	-
South West Qld	<i>awaiting election</i>	-

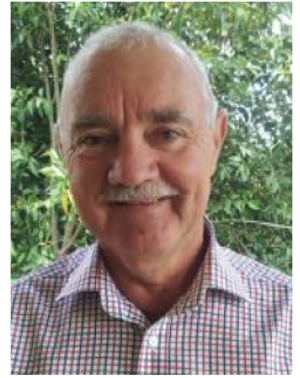
## Staff

Statewide	Executive Officer	Darryl Ebenezer
-----------	-------------------	-----------------



Nancy M. Wells and Karl Pillemer

# Chair's Report



It was an honour to be nominated to the position of Chair of QWaLC at the last Annual General Meeting late November of 2015.

Over the last 12 months a dedicated incoming Executive worked consistently to achieve numerous outcomes. The Executive team comprised Deputy Chair Mark Van Ryt (Southern and Northern Gulf), Treasurer John Reghenzani (Terrain) and Secretary Bardhold Blecken (South East Queensland). Thank you all for your extra input behind the scenes to keep the wheels turning. Also, recognition must be given to outgoing Chair, Rhondda Alexander, for all of her hard work over the last 6 years. Rhondda left the position with the organisation primed and ready to go.

Acknowledgement and appreciation is also extended to the rest of the Board for their consistent input toward the smooth operating of QWaLC throughout the year. Board members include Michelle Hanrahan (Fitzroy), Graham Armstrong (Mackay/Whitsunday) Philip Moran (Burnett Mary) John Giese (Cape York) who resigned in April 2016, and was replaced by Jason Carroll.

Recognition and thanks are also extended to our Executive Officer, Darryl Ebenezer, for his support and constant diligent endeavours in pursuing QWaLC's roles and agendas.

In June 2016 our Community Relations Officer, Anna Watson, was farewelled after 6 years working for QWaLC. Anna was nearing the end of her physiotherapy degree and left to pursue a career in this field. We wish Anna all the best for the future. Darryl is now our only fulltime employee, having engaged contractors to fulfil the tasks of communications and administration.

Over the past 12 months, QWaLC's activities on behalf of our many NRM volunteer members have included:

## **Representation**

It's encouraging to see the membership continually growing. As the peak body for natural resource management in the Qld, QWaLC provides key services for well over three hundred incorporated groups and over 30,000 volunteers throughout the state.

## **Advocacy**

We have continued to conduct listening forums throughout Queensland and it has been of interest to note that the priority items of 12 months ago are still of major concern today. As advocate for NRM volunteers throughout the State, in November 2015 Darryl and I met with three of the opposition Shadow Ministers to discuss issues described below. In early 2016 we again met with three sitting Labour Ministers, Anthony Lynham, Minister for Natural Resources and Mines, Stephen Miles, Minister for Environment and Heritage Protection, and Lynette Donaldson, Minister for Agriculture and Fisheries. At these meetings all three ministers were prepared to listen to our concerns but the consistent message received was that for action to occur there needs to be a groundswell and pressure from all elected members, in order for government to make change. To effect this change we need to encourage all volunteers to make contact with and talk to their local members of parliament.



Major topics highlighted during the discussions with opposition and sitting members included:

- Local Landcare Coordinators within community member groups.
- The role of volunteers in protecting and enhancing the Great Barrier Reef.
- QWaLC's involvement in the Environment Round Table discussions.
- The need for a small environmental grants program.

The forming of alliances and signing of a Memorandums of Understanding (MoUs) with all Regional NRM Bodies throughout Queensland is now all but completed. These agreements have been reinforced in turn by the NRM's peak body, the Queensland Regional NRM Groups Collective Inc.

A MoU between Sunfish Queensland Inc. and QWaLC has been successfully put in place, with acknowledgement and thanks to Mark Van Ryt for his work in making this happen.

## **Networking**

As Chair of QWaLC I was nominated to represent Queensland on the newly restructured National Landcare Network (NLN). Restructuring of the NLN over the last 6 months has seen the organisation go from an incorporated organisation to a company limited by guarantee. During this time, the workload has increased considerably with the NLN Board meeting regularly for face-to-face meetings in Launceston, Adelaide and Melbourne (coinciding with the National Landcare Conference) as well as numerous teleconferences as needs arose. Also as part of the NLN position I attended a meeting in Coffs Harbor attended by the Boards of the NLN and Natural Resource Management Regions Australia.

## **Promotion**

In April, QWaLC was again proud to sponsor the Maleny Wood Expo's annual Wootha Prize. QWaLC will again be sponsoring the Queensland Premier's Sustainability awards in Brisbane this November.

## **Insurance**

New applications continue to be received from NRM volunteer groups seeking to become members of QWaLC, particularly from the South West NRM region which in the past have been inactive.

Operationally, meetings throughout the last 12 months included Executive as well as full Board meetings, on an 'as needs' basis both in person and via teleconference. All Board and Executive team members keep in regular contact with each other between meetings via email or phone calls.

## **What's to come?**

Our 2016 AGM will be held in Brisbane again this year in early December. We look forward to welcoming some new Board members as a number of regional representatives are up for election. We will need at least one new Board member specifically for South East Queensland as Bardhold Blecken has recently resigned his position. I'd like to take this opportunity to thank Bardhold for his input, and wish him all the best for the future.

Acknowledgement should be expressed for the funding support received from the Queensland State and Federal Governments, as well as support received from the National Landcare Network, Landcare Australia Limited, the Queensland Regional NRM Groups Collective and, most importantly, the many natural resource management volunteers throughout Queensland.

QWaLC is a resilient body, representing grass roots members. As a group we possess a positive outlook, and I look forward to being involved with this effective organisation into the future.



**Geoff Elliot**  
Chair



# Executive Officer's Report

Queensland is a big place. Many people forget this. It is large, not only in distance but in social, economic and environmental diversity. Activities and projects that work well in the north may not work as well in the southeast and vice versa. The hundreds of people I speak with and meet in the course of the year constantly remind me of this diversity. Listening to the stories of how people are enhancing and protecting their local environment is humbling and encouraging. Sharing these messages and practical actions with decision makers always makes a difference in how our message of local responses to local issues by committed volunteers is received.

You can see from the messages we publish in our e-news that member groups are engaging in almost as many activities as you can imagine. Our social media activities are constantly promoting your exciting and practical stories. Remember to take a photo and keep sending them in so that they can be shared as they are so encouraging to others.

Ensuring appropriate and accessible information around the three insurance policies we offer to member groups is always important. Thanks to Gary and Brenton from AON who are always available to answer our questions.

Practical tools to assist in our group activities were enhanced this year with the provision on the QWaLC website of 'Landcare in a Box'. A great resource that will be enhanced and constantly updated over coming months and years.

This year saw Anna leave to pursue her next career. Thanks to Anna for her dedication and support for more than 6 years.

Also thanks to Mellissa, Glen and Lane for all their help and work over the past year.

Your Board Members have worked diligently throughout the year bringing the message of the importance of the effort member groups make and contribute in their communities. I have enjoyed working with them all.

As Chair, Geoff Elliot brings a different perspective to the role and I value the conversations we have as we

take the positive message of Landcare and the value of environmental volunteers to the wider community.



I would like to particularly thank Rhondda Alexander for her contribution to the work of promoting the importance of volunteers in communities. Rhondda definitely left her very positive and practical stamp on QWaLC.

The Reef Range and Red Dust conference held in Caloundra was a great success. The conference Landcare Awards Dinner recognized the significance and importance of the work by individuals and groups in enhancing and protecting the environment. A big thank you to Landcare Australia for their assistance in holding the awards. I am sure the Queensland winners will make a good showing at the National Landcare awards in late 2016. A special thanks to Lane Pilon for her work above and beyond the call to make the conference a memorable event for all who attended.

Our positive relationship with all 14 Queensland Natural Resource Management Groups continues to develop and grow. At a regional and local level member groups and QWaLC are committed to finding practical ways to implement our MOU's. Thanks to all the CEO's, Chairs and staff who work together with us to ensure better outcomes for our communities.

It has been a pleasure to work with the committed staff of all the Government departments we talk to and interact with. Both the Queensland Department of Natural Resources and Mines and the Commonwealth Department of the Environment have contributed funds to ensure the work of environmental volunteers in the Queensland community can continue.

A handwritten signature in black ink, appearing to read 'Darryl Ebenezer'.

**Darryl Ebenezer**  
Executive Officer



# Treasurer's Report



I have been QWaLC Treasurer since February 2015, so this the first full financial year on which I report. I have been ably assisted during this period by QWaLC Executive Officer, Darryl Ebenezer, and QWaLC contract book-keeper, Dorian Pozzan. Their ongoing assistance has made my job much easier. I am pleased to report that QWaLC Auditor, John Gosper of Audit and Assurance Pty Ltd has provided a favourable independent assessment of the Association's Financial Reports.

As your Treasurer I submit this section of the QWaLC Annual Report, so members are better informed about how QWaLC is travelling financially. My appointment to the QWaLC Board is not only to represent the Wet Tropics region, but also as Treasurer. Therefore, I have a duty to ensure that members throughout the entire State benefit from having the finances of your Association well managed. QWaLC performs many functions, but that of supplying insurance cover is absolutely essential. Because of risk, volunteer organisations caring for the land would, in all probability, cease to operate if they did not have insurance cover.

From the audited 2015-2016 Assets and Liability Statement (see pages 25-30), members can see for themselves that QWaLC remains in a healthy financial position. QWaLC as a "not-for-profit" organisation does not aim to make a profit as such. It is the objective of the Board to run a very lean and efficient organisation and expend funds to achieve the objectives of the Association. While aiming to achieve a very small operating margin of surplus over time, it is not the Board's objective to accumulate surpluses beyond operational requirements. Accordingly, the surplus of \$188,416 last year is balanced this year by a deficit of \$79,929.

As explained in my previous Treasurer's report, the major part of last year's surplus was accumulated to provide for the Landcare Awards and the Reef, Range and Red Dust Conference successfully held from 31 August to 2 September 2015 at Caloundra. Other funds accumulated in 2014-15, as previously outlined, were project income planned for and actually expended in 2015-2016. A good part of QWaLC's sound financial position can be attributed to QWaLC's Executive Officer, Darryl Ebenezer, under the guidance and support of QWaLC Chair, Geoff Elliot.

My Treasurer's vision last year of ensuring that QWaLC's finances are appropriately administrated by Directors with on-line access to information necessary for them to fulfil their financial and administrative obligations has been achieved. To this end I have supervised the successful transition to QWaLC's new banking provider. The Association now has access to upgraded banking services that are suitable for an organisation with a widely separated and remotely based Board of Management. On-line banking, with appropriate fiscal safeguards is being used by your Board, as are the Xero on-line accounting package and Dropbox for document sharing.

I have thoroughly enjoyed working with Geoff, QWaLC's Chair, the Executive and other members of the QWaLC Board. I remain invigorated by their enthusiasm and I know that, like myself, all are dedicated to supporting volunteers who work to manage and improve our State's natural resources.

**John Reghenzani**  
*GAICD, BAgSc (2A Hons), QDA (Hons)*  
QWaLC Inc. Treasurer



## REGIONAL REPORTS FROM THE BOARD

A key area of concern for Eastern Cape York over the last 12 months has been the Great Barrier Reef. A significant coral bleaching event and the tail end of a massive Crown of Thorns outbreak was a stark reminder of the immediate threats to the Reef. Deep concern has been expressed by our Community to Government. Chief Scientist Geoff Garrett AO from the Office of the Great Barrier Reef came out on country to discuss the Great Barrier Reef Water Science Taskforce's final report with our Community. Key messages were that the Reef is in trouble—losing almost half its coral cover between 1985 and 2012; and that this decline is due to poor water quality and the cumulative impacts of climate change. Mr Garrett told us that improving water quality now will help build the Reef's resilience and its ability to recover.

Our concern has also been expressed with the findings of the recently release initial Cape York Water Quality Improvement Plan produced by CYNRM and South Cape York Catchments. While there has been a perception that Cape York is pristine, this document clearly shows that our land use practices are impacting the Reef. The plan outlines how we as a community might address water quality challenges.

Good work is happening though. At the last State Landcare conference, The Balnggarrawarra Rangers where recognised with a 'partnership award' for their work on erosion control and they are now finalists in the National Awards. We expect to see some investment over the next 3 years in sediment mitigation work. Projects are likely to include gully remediation, grazing land management, erosion control and fire management to improve ground cover.

There have been significant benefits to Indigenous groups and Graziers as they received funds for carbon credits for their Savannah burning. Last year we saw a reduction in late season wildfires across the Cape as an increased capacity for burning meant more early burns were completed. There was also increased cooperation between established properties and new properties undertaking fire management and planning.

*Photo below - Chief Scientist Geoff Garrett AO from the Office of the Great Barrier Reef (5th from left) on Country with Traditional owners, Local Scientists and NRM workers - photo courtesy of Lyndal Scobell, CYNRM*







*Photo above - coral beaching off Cooktown -  
photo courtesy of Jeff Shellberg*



*Photo below - Crown of Thorns  
- photo courtesy of Jason*



*Photo left - Chief Scientist Geoff  
Garrett AO from the Office of the Great  
Barrier Reef with Laura Rangers - photo  
courtesy of Lyndal Scobell, CYNRM*

A new initiative "Thoughtful Travelling Cape York" is gathering steam. This is an alliance of Cape York organisations working together to reduce the damaging environmental impacts caused by people travelling on Cape York. Issues such as rubbish, spreading weeds, illegal dumping, unplanned fire and illegal access can all create longer term problems for the environment. Weipa and Western Cape Tourism spokesperson, Aimee Robinson, said the number one reason people travel in Cape York is to experience its remote and pristine natural environment but that increased littering and illegal dumping were becoming a problem. "This campaign is about ensuring that travellers have the practical information they need to deal with rubbish disposal responsibly and encouraging them to be considerate of other travellers who will visit that spot afterwards."

In a region with very few Landcare groups we are pleased to welcome the Rossville and District Citizen's Association Landcarers who have recently decided to become a Landcare group. This group is situated in the northern wet tropics World Heritage Area. They are interested in looking at non chemical ways of limiting Singapore Daisy spread and documenting the distribution of cassowary, Bennet's tree Kangaroo and platypus in their area.



## REGIONAL REPORTS FROM THE BOARD

In the region I represent on the QWaLC Board, land carers, like our population, are few and very far between. I represent only nine groups registered with QWaLC. These groups are generally small with perhaps a dozen active members, they have no paid coordinator and you could say they run on "the smell of an oily rag". They are driven primarily by the passion of the individuals that take up the executive positions on their committees.

With committed land carers so few in number I spend most of my time working very much at a "grass root" level. I am President of the Mount Isa Landcare Group and the Secretary of the Gregory River Landcare Group. The primary focus of both of these groups is the noxious weeds invading our beautiful range land and riparian environments.

The Mount Isa Landcare group has a relatively large pool of urban people and other community groups to tap into as a weekend weed warrior labour force. I believe as long as the volunteers continue to enjoy their landcare adventures they will keep returning for more. Our task is to make sure they have a stimulating time which is sociable, fun, educational – a great experience in a beautiful natural setting. We also have to make sure they are kept safe, well fed, cool and hydrated.

The radius of our activities is about 80 km from the city. Far enough for a day trip activity then return home. The volunteers generally donate their own transport. To operate we only need small amounts of cash to feed the volunteers. With this key low cost model, I am confident our well-motivated landcare group can continue to help pastoral landholders maintain the relatively pristine rangeland environment surrounding our small mining city of Mount Isa.

The Gregory River in comparison is much more remote with few local volunteers available to help people on the land. The main effort of the Gregory River Landcare Group has become to channel State and Federal funds into contracts for weed control, erosion control and waste management.

I have a full time job underground as an electrician in the Mount Isa Copper Mine. Never-the-less community work, landcare in particular, has become my lifestyle and focus of weekend activity. For example, whenever possible I speak to raise awareness about landcare, QWaLC and the "weeds of national significance" (WONS). I never let a chance go by - advocating important NRM knowledge and turn friends and acquaintances into weed spotters!





## SOUTHERN & NORTHERN GULF MARK VAN RYT



Now to summarise let me dot point what *this* "weekend weed warrior" has done lately to support landcare in the Northern and Southern Gulf region.

### 2015

- 15<sup>th</sup> July – presentation on "Weeds of National Significance" at training course.
- 3<sup>rd</sup> September – my wife and I attended the State Landcare conference in Caloundra.
- 5<sup>th</sup> November – presentation on landcare and WONS to the Mount Isa Scout Group.
- 19<sup>th</sup> November – successful nomination – Mount Isa Scouts awarded Community Environmental Award.
- 20 November – Mount Isa Landcare AGM – re-elected as President.
- 22 November – Lake Moondarra belly ache bush hunt with Mount Isa Scouts.

### 2016

- 23<sup>rd</sup> January – Corella River belly ache bush with four other land carers.
- 1<sup>st</sup> February – Corella River belly ache bush with Mount Isa Landcare Treasurer, Charles Curry.
- 10<sup>th</sup> February – QWaLC Executive teleconference meeting.
- 10<sup>th</sup> February – Coral Cactus patch – locate and scope spread with Charles Curry
- 25<sup>th</sup> February – delivered QWaLC presentation to Southern Gulf NRM and signed MOU.
- 26<sup>th</sup> February – Coral Cactus with Charles Curry and the Cloncurry Land Protection Officer.
- 27<sup>th</sup> February – Gorge Creek rubber vine with Charles Curry.
- 1<sup>st</sup> March – Corella belly ache bush story published in "Landcare in Focus" national magazine.
- 30<sup>th</sup> March – QWaLC Executive teleconference meeting.
- 13<sup>th</sup> April – QWaLC "Face to Face" Board meeting in Rockhampton.
- 27<sup>th</sup> April – Gregory Landcare AGM – elected as Secretary.
- 18<sup>th</sup> June – Coral Cactus with four other land carers.
- 24<sup>th</sup> June – QWaLC Executive teleconference meeting.
- 25<sup>th</sup> June – Corella River – nine volunteers camped out to chase the remnant of the Corella River belly ache bush infestation.
- 2<sup>nd</sup> July – Lake Moondarra belly ache with my brother Greg.
- 4<sup>th</sup> July – Gorge Creek rubber vine with ten people.

In September 2016 I will travel back to the Atherton Table Land where I hope to meet some of the land carers in the Northern Gulf NRM region.





## REGIONAL REPORTS FROM THE BOARD

I became the Wet Tropics appointed representative in February 2015. Since appointment I have also held a position on the Executive Committee as QWaLC Treasurer. Having committed 30 years to coastal Queensland sugar-industry research and eight years to Terrain NRM, I now look forward to an even more fulfilling and enjoyable time with committed volunteer land carers in the region. I was born and raised in Far North Queensland and will always love this most diverse of Queensland regions.

As I have written, the Wet Tropics possesses unique natural beauty, but still has its challenges. Climatic and topographic variability pose difficulties for the population. Landholders and volunteer carers alike are confronted by environmental issues, lack of infrastructure and challenges of damage to the World Heritage Rainforest and the Great Barrier Reef by cyclones, torrential downpours, droughts, invasive pests, and feral animals to mention a few.

QWaLC is sensitive to the needs of its member groups. Your Chair, all other Board Members, your Executive Officer and yours truly continue to actively advocate on your behalf at all levels. It goes without saying that the essential job of managing Wet Tropic's natural resources needs to continue.

While external assistance by way of funding support is critical to the viability and vitality of our groups, their real strength lies within. It is the enthusiasm, knowledge and drive of members, with their desire to share and commit to projects that will see our groups thrive and prosper.



QWaLC is here to assist with sharing your good ideas through networking and we will promote your good news in every quarter.

After last year's listening forums, QWaLC attended four regional feedback sessions in the Wet Tropics this year. Feedback was provided on:

- progress of funding for local Landcare coordinators,
- State-wide small grants program,
- Insurance,
- the National Landcare Network and much more.

Wet Tropics member groups continue to make credible progress. A few examples, by no means an exhaustive list, include: continuing revegetation of riparian and wildlife corridors (TREAT); research to control Navua Sedge (Eacham Landcare); publication of 'weed of the month' in local papers (Malanda and Upper Johnstone Landcare) and use of Biochar gabions to remove diuron contamination from farm drains (JRCMA). Without exception, Wet Tropics groups fill a credible social need, where people can meet and share in healthy outdoor activities, while caring for the land.

Douglas Shire Sustainability Group and Wet Tropics Biodiversity Foundation are welcomed as new QWaLC members. These new groups are working on ecological sustainable development, preserving unique environments and conservation of biodiversity through:

- Promoting social, economic and environmental balance.
- Recognition and promotion of traditional owners' sustainable practices.
- Large scale revegetation to protect remnant stands and riparian zones and
- Landscape-scale silt traps.

I look forward to ongoing engagement with the 35 regional groups in the Wet Tropics.





*Photo above- Malanda  
Landcare Fencing Course*

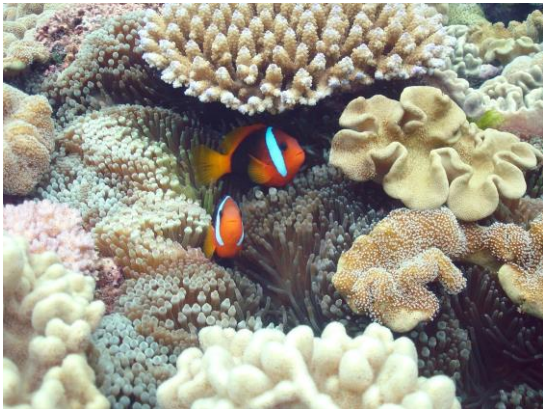


*Photos right & below-  
Malanda Landcare  
Chainsaw Course*





## REGIONAL REPORTS FROM THE BOARD



2015/16 has been a year of unprecedented demand for natural resource management services by on-ground delivery groups with this being the final year of the current round of the Australian Government's Reef Rescue 2 Program as well as the last year of some State Government programs.

The Regional NRM Group, Fitzroy Basin Association (FBA), continued to hold community forums and this year was hosted by Capricornia Catchments in the Three Rivers area. With the FBA Board travelling to and meeting in Middlemount, it provided the opportunity for local landholders to hear about programs and projects as well as discuss local issues with Board members and regional staff.

Capricornia Catchments hosted and collaborated with many other landcare and community groups and in partnership with FBA, delivered more than 20 community events during this period with specific support received from QWaLC to fund the 'Too Lovely to Litter' media campaign and community event of the Capricorn Coast. The event held in conjunction with community markets in Yeppoon raised awareness of issues and the need to reduce litter in the ocean and on the reefs and beaches. A Reef Blitz event also received support.

Capricornia Catchments was delighted that the QWaLC Board held a meeting in Central Queensland in early 2016 in our Rockhampton office which provided the opportunity to meet Board members and share information about local programs and projects.

The insurance services brokered by QWaLC continue to be valued by many of the NRM groups in our region.







FBA and the three delivery partners, CHRRUP, DCCA and Capricornia Catchments continued to engage with regional councils to plan and deliver training and awareness opportunities for landholders, groups and the wider community in areas such as disaster and drought recovery and resilience and pest management. The industry led Grazing BMP delivered in conjunction with industry, government and NRM groups continued to engage increased numbers of graziers to assess their operations against industry best practice.

Water quality remains an issue for many of our communities and this year FBA and partner organisations developed a Regional Water Quality Improvement Plan. The priority areas identified in the plan assist with the initial allocation of resources to higher risk areas across the basin with information easily accessed through the interactive web based system which provides access to vast amounts of up to date information about natural resources in the region.





## REGIONAL REPORTS FROM THE BOARD

At the QWaLC Annual General Meeting held on Saturday 28th November 2015, I was elected the representative for the Burnett- Mary region. I walk in the shadow of Maree Prior who held the position for 6 years. I would like to thank Maree for her contribution and helping me understand the role.

I have lived and worked in the Burnett – Mary for over 25 years, and have learnt a fair bit about the region in that time. As was Maree, I am on the Steering committee for the Regional Landcare Facilitator Program. Kay Enkelmann from the Burnett Mary Regional Group [BMRG] is our representative. Kay is a pleasure to work with and her efforts were recognised when she won the Australian Government Landcare Facilitator or Coordinator Winner at the Queensland Landcare awards held in Caloundra. QWaLC was a sponsor of the awards. Special mention to the work of previous Chair, Rhonda Alexander for her work to make the conference a success.

A highlight in my time at QWaLC so far has been

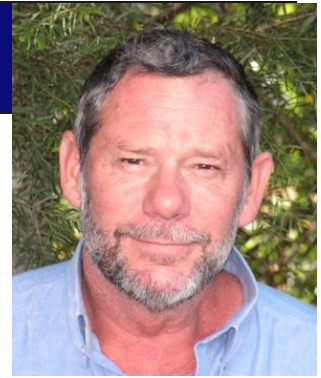
the Queensland Community Native Nursery Forum held at Pomona on the 28th and 29th April 2016.

This forum funded by QWaLC with assistance from the Federal Government, and brought together Nurseries from around the state to look at learning from other groups and to seek opportunities for collaboration. A Welcome to Country by the Chair of Noosa & District Landcare Group [NDLG], Luke Barrowcliffe was followed by an address by Darryl Ebenezer, Executive Officer of QWaLC. A group discussion followed about what works, and what does not work for each group. This was particularly useful as we could then drill down on areas of interest to individual groups.

Lex McMullen from Nursery & Garden Industry Queensland spoke about irrigation in Nurseries. Isak Schabert, Wildlife Officer (Maryborough), Wildlife Management I Nature Conservation Services, Department of Environment and Heritage Protection enlightened the group on permit requirements to propagate restricted plant species.







We intend to follow up on this in the future with an outline which will go to QWaLC members.

We had NDLG staff speaking about new stock control systems, and Rachel Lyons [Business Development Manager for NDLG] speaking about opportunities such as the Federal Government's 20 million tree program.

Tours of NDLG Nurseries and a site visit wrapped up proceedings. The good thing to me is that communication has continued with the groups, that rather than just a one off workshop, it is the 'gift that goes on giving'.

11th May saw the Chair of QWaLC [Geoff Elliott] and I don ties and jackets to meet the Minister for Agriculture and Fisheries, the Honourable Leanne Donaldson at Parliament House in Brisbane. Geoff spoke of the importance of the work that QWaLC does, the need for funded Coordinators, particularly in

regional areas, and the Landcare movement's networks.

I mentioned ways that QWaLC members could help the Government roll out the new Biosecurity legislation and help to support communities in times of natural disasters. The Minister and her advisors were interested, articulate and supportive of QWaLC's role.

I have recently had set up a group email link to the Burnett-Mary members. I encourage members to keep in touch with QWaLC by visiting the website regularly, and by contacting me directly. There are many things that individual groups grapple with that we may be able to help with.

I have already met with many of the groups and intend to meet with more in the next financial year.





## REGIONAL REPORTS FROM THE BOARD

As the first year as a QWALC Board member representing the Burdekin Dry Tropics and the Mackay/Whitsunday Regions comes to a close I am gradually coming to grips with the challenge of the role as I progressively make contact with the 25 groups across the two NRM regions. They are spread along the coast from Sarina in the south, some 500km north to Rollingstone and inland from Emerald to Charters Towers, encompassing the Reef Catchments and Burdekin Dry Tropics NRM Bodies.

During the year the following groups have joined QWALC - Mackay Regional Botanic Gardens Friends Association; Rollingstone and Districts Community Association and Whitsunday Residents against Dumping.

I have also ascertained that two groups in the Burdekin region have folded. The member groups are diverse, ranging from community conservation and special issue groups to more typical Landcare and Coast and Reef care groups. This includes three Turtle Watch/Rescue organisations. The more typical Landcare groups range from small community groups such as the dedicated Toomulla Coast care group who's dozen or so members get together once a month to maintain the natural integrity of the local Beach Scrub, to the dynamic Dalrymple Landcare Committee with a membership of some 120 graziers dedicated to innovation and best practice in cattle grazing. Indeed - Landcare is for everyone.

Highlights during the year included the very popular field days on soil health that were run by Central Queensland Soil Health Systems and which were supported by Reef Catchments and by local Landcare groups. Reef Catchments dispensed a very welcome \$100,000 of NLP funding via a competitive application process benefiting a number of community groups. Burdekin Dry Tropics dispensed around \$72,000 covering nine community-based projects.

Across the regions member groups, a wide variety of events and activities were held.

Here are just a few examples:

- Throughout 2016 Eco Barge Clean Seas has been running 12 marine debris removal trips, numerous count and sort activities along with a huge community focused land based clean-up in May. So far this year 8,204 Kg of refuse has been collected.
- Lower Burdekin Landcare secured three 6-month Green Army Contracts in April 2015 which ran through this financial year.
- Coastal Dry-Tropics Landcare conduct weekly community revegetation activities at several revegetation sites in the Townsville region.
- Whitsunday Catchment Landcare in association with Reef Catchments has been conducting camera and cage trapping to monitor cats in peri-urban areas to promote enlightened care and control of domestic cats by their owners.
- A personal highlight for me was attending the informative City-Country Field Day hosted by Dalrymple Landcare at Virginia Park cattle station just east of Charters Towers and learning about sustainable cattle grazing management in a highly variable climate.





## BURDEKIN/MACKAY WHITSUNDAY GRAHAM ARMSTRONG



During the year I met with both of the Regional Landcare Facilitators hosted by their respective NRM Bodies and joined the Steering Committee for the Mackay/Whitsunday Regional Landcare Facilitator Program. Both facilitators have very active programs in place striving to meet the needs of primary producers and community groups. Discussion with the Burdekin Dry Tropics facilitator has revealed that there are two burgeoning Landcare groups developing in the Bowen/Collinsville area which are production focused around sustainable agriculture and grazing respectively. The facilitator is now keeping me in the loop about projects and activities in the region.

In November last year I attended the Reef Catchments AGM in Mackay. I have also attended the Healthy River to Reef Partnership meetings and can report that the 2016 Report Card for the Mackay/Whitsunday region is on schedule for October this year. There are still many data gaps remaining around freshwater quality in major rivers and the Partnership will be focusing attention on the need for more monitoring in the Proserpine and O'Connell rivers.

Another associated monitoring requirement being looked at is the re-establishment of Sea-grass Watch activities around Cannonvale Beach. I have assisted with the Reefblitz Citizen Science event held in Townsville and on Magnetic Island in October last year and remain involved with local threatened species through assisting the Mackay Conservation Group with Eungella Honeyeater monitoring and by being a member of the Proserpine Rock Wallaby recovery team.

A general observation is that the groups that have been able to maintain Coordinators appear to be the most active and effective within their communities. Landcare groups across the region continue to find the current funding environment difficult to endure and I have seen a decrease in the number of paid hours in Landcare Coordinator and Landcare Officer roles.

I have no doubt that the capacity to deliver on-ground projects is slowly diminishing across this region, even though the interest and enthusiasm among member groups remains strong. Nursery activities remain a beneficial focus for those groups producing local provenance plants such as Sarina Landcare Catchment Authority, Whitsunday Catchment Landcare, Coastal Dry Tropic Landcare and Lower Burdekin Landcare Association.

In the year ahead I will continue to contact QWaLC member groups in the region. In light of the predicted difficult times ahead and based on an understanding that we are better off united, I am involved in the revitalisation of the Central Coast Queensland Landcare Network (CCQLN). Representatives from its member groups - Pioneer Catchment Landcare, Sarina Landcare Catchment Authority and Whitsunday Catchment Landcare met in June to explore practical ways of supporting each other and dealing with the Regional NRM Body in a consistent and united way.



## REGIONAL REPORTS FROM THE BOARD

A significant event in the south east Queensland Region has been the Merger of Healthy Waterways Ltd with SEQ Catchments Ltd.” starting a new era for the management of South East Queensland’s land and waterways with the official formation of Healthy Waterways and Catchments Ltd.

This new organisation combines the leading not-for-profit organisations Healthy Waterways and SEQ Catchments, whose members voted in the change on 28 June 2016. Healthy Waterways and SEQ Catchments will continue to operate under their existing brands while they work their way through the transition to the new entity to provide a “one stop shop” for NRM aligned on-ground activities in the region.

On the Gold Coast a DEHP funded project of Eco Village swale restoration in the Currumbin Valley has been completed on schedule and on budget. The Gold Coast Catchment Association, a member of QWaLC, has been auspicing this project and provided administrative support for it.

A substantial project is under way supported by the Austinville Landcare Group, a Member of the Gold Coast Catchment Association, to eradicate feral Animals in that area.



The SEQC Members Association, a QWaLC Member, and one of the owners of SEQ Catchments and the new entity Healthy Waterways and Catchments commenced a project to harness the knowledge and abilities available in the community in a Citizen’s Science project providing input into Water Quality monitoring. This project is supported by SEQ Catchments and a variety of Water Utilities.

Member Groups of SEQC Members Association reported that it is of great concern to them that

“There is significant local concern regarding the proposed changes to the SACS regulations flagged by DNRM, as well as concern regarding the impacts the Government’s proposed VMA Amendment legislation will have on individual’s ability to appropriately manage vegetation in the long term. There is also concern about the lack of compensation for landholders regarding managing public good assets on privately held/managed land.”

Also of great concern is that

“Proposed changes to the Nature Refuge program are seen as essentially and critically flawed as they place an inequitable liability on landholders that could potentially be enforced with a penalty system over the life (in perpetuity) of the refuge. It proposes that the Refuge once declared will no longer have the flexibility to be revoked in the future and is tied to title in perpetuity. Despite the changes requiring landholders to consistently achieve pre-set management outcomes and goals determined by EHP exclusively and without negotiation, no compensation mechanism is proposed to assist landholders with management costs in the long term. The main driver behind proposed changes to the Nature Refuge Program is to assist the State in meeting the goal of 17% of Queensland within the Protected Area Estate”.

## SOUTH EAST QUEENSLAND BARDHOLD BLECKEN



"It is completely naïve of the Department and Government to expect improved biodiversity outcomes without providing a funding mechanism to landholders to achieve an outcome focused process on behalf of the State.

Perversely the current proposal is likely to alienate landholders from entering the program where they bear an inequitable level of cost burden and liability for a public good outcome. I would like to see SEQC Members Association to support a proposal within the feedback timeframe which advocates compensation mechanisms that are priced at market rates for participating landholders.

This would have two effects, it would drive uptake of the program itself as the opportunity cost of foregone production for farmers especially would be compensated, as well it would provide an adequate and reliable funding steam in the long term to facilitate active and adaptive management of biodiversity and vegetation in order for predetermined KPI's to be fully achievable long term."

*quoted from a sector report of a member Group*

I will be recommending that QWaLC consider its response to and support for this request.





## REGIONAL REPORTS FROM THE BOARD

This year hasn't varied greatly from previous years. Landcare Groups within the region are still struggling financially, but continue to operate with funding at a minimum. They are to be commended on the projects and activities that have been set in motion or achieved over the last 12 months (some highlights of these are detailed below).

### Inglewood and Texas Landcare Association

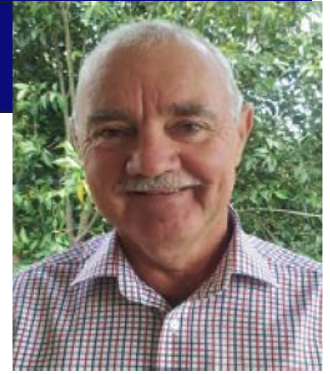
- Cats Claw Containment Program on the Dumaresq River had been completed through State funding from the Everyone's Environment Grant.
  - Sought variation to the grant funding in order to acquire a unmanned aerial vehicle for the purpose of more time effective sighting areas of weed regrowth. Variation was approved and the drone was purchased and used successfully as expected.
  - Project very successful in cross boarder relations.
  - The acquittal has been completed and is in process of being submitted, with \$15,000 funds outstanding to be received.
- Aerial shooting conducted in Dumaresq River Valley with 10 landholders contributing funds to the shoot, as per agreement with GRC as part of the Federal Governments Drought Funding for Feral Animal Control, in conjunction with the Goondiwindi Regional Council.
- Roadside litter program in conjunction with QMDC, funding from State Government.
- 25th Anniversary Landcare Grant for Feral Animal Control completed and acquitted (finalised).
- June 2016 finalised Phase 1 of the Federal Government's Drought Assistance Program for Feral Animal Control, in particular trapping program in the Gore district (finalised).

### Waggamba Landcare Group

- Jan 2016, worked with council to apply for \$1M in funding for 2 water networks we coordinated last year for the Toobeah and Bungunya communities. Funding will be announced sept 2016. If successful the project will drought proof 75,000 ha of agricultural land.
- April 2016 held a 4 day Nutrition Farming Course with 29 producers attending. Discussing soil and plant health.
- June 2016 & Aug 2016, held 2 field days extending the Harrisia Herbicide Trial information with 55 producers attending. The field days were held on site where there are over 60 trial plots. As the trial plots are monitored we will continue to hold field days there to extend the results to the community to help inform their control programs.
- June 2016, Whalan Creek Group have been supporting the Tin Hut Group over the last 12mths with their on-ground works, with 13km of vegetation fencing and 5 watering points being installed and completed by June 2016. Only 2km of fencing still to be completed.



- Jan – Sept 2016, With support from our council we secured over \$600,000 for 3 cluster fence groups in our area; Kindon, Talwood and Mt Carmel, which in turn has seen us facilitating many meeting to help them finalise their fence design, quotes, group governance structures, finances etc. Talwood has installed about 50km of their 144km fence, with Mt Carmel starting on their 80km in November and Kindon starting on their 25km in the early new year. By completion 110,000 ha will be protected.



- Dec 2015- June 2016, we supported 7 producer groups with feral pig control activities across 316,000 ha with 3818 pigs destroyed from aerial shooting and over 8 Tonne of baited grain taken.
- July 2016, we held the inaugural Annual Waste Oil Muster, travelling 1400km of back roads we collected 94,000L of waste oil off farm properties over a 5 day period. With the support of Cleanaway the oil will be recycled into a useable product again.

#### **Maranoa Regional Landcare Association**

- Held an Indian Myna program starting with an awareness project and setting up a Roma interest group for reporting sightings. MRLA also ran a green nomads day to build some Indian Myna Traps.
- MRLA are the first Savory Institute Hub in Australia and are delivering holistic management online courses and training courses.
- MRLA run a facebook page with 75 members and a website which includes holistic management resources and a blog.
- MRLA have run three QMDC planned events in 2015/16 and three CSG bore water monitoring information days (with DAFF). QMDC have been providing assistance with soil conservation field days which will continue into 2016/17
- MRLA also support the Roma Bush Gardens – an urban landcare group – the group had a tree planting and an open day for Easter in the Country as well as regular gardening working bee days. The gardens showcase native plantings native habitats common to the Maranoa and are a great place for jogging and dog walking.
- MRLA completed two Landcare 14/15 grants. The first was on setting up the holistic management hub demonstration site and the second was for measuring natural capital.
- MRLA are joining with Pasture Profit group to hold a NRM Spatial Hub workshop in October.
- MRLA are currently exploring a beekeeping interest group as several current members have taken up beekeeping recently.
- The main limiting factor for our group is not having the resources to continue to pay for a coordinator. The process of maintaining an incorporated association and administering grants is quite complicated without a paid coordinator, the accounts and paperwork fall into a state of disrepair.

#### **Millmerran Landcare**

- Bringalily-Mt Emlyn sub catchment group implemented works, primarily boxthorn and tree pear control.
- Upper Canning group has had a couple get togethers, including field days on pasture and legumes.
- Dunmore group has come together and we've had the mapping workshop and a field day looking at biocontrol options for Harissia Cactus.
- Biggest issues at present would have to be Harissia Cactus on the western and northern sides of Millmerran.
- Lippia is quickly becoming an issue but I don't think people realise the effect it can have.
- Running Carp Buster competitions (2 a year). One coming up on 8/9th October.
- Tree planting is happening through CA's Enrich program. One landholder planted 4,500 trees across his property.



## QUEENSLAND WATER AND LAND CARERS INC

### COMMITTEE'S REPORT

Your committee members submit the financial report of Queensland Water & Land Carers Inc. for the financial year ended 30 June 2016.

#### Committee Members

The names of the committee members throughout the year and at the date of this report are:

Rhondda Alexander (term complete 28 Nov 2015)

Graham Armstrong

Michelle Hanrahan

Bardhold Blecken

Phil Moran

Jason Carroll

Maree Prior (term complete 28 Nov 2015)

Geoff Elliot (appointed 28 Nov 2015)

John Reghenzani

John Fisher (resigned 18 Jan 2016)

Owena Reimers (term complete 28 Nov 2015)

John Giese (resigned 21 Mar 2016)

Mark Van Ryt

#### Principal Activities

The principal activities of the association during the financial year were to act as the peak body for the volunteer NRM groups (Landcare, Coastcare etc) in Queensland and to represent and advocate for these groups.


#### Significant Changes

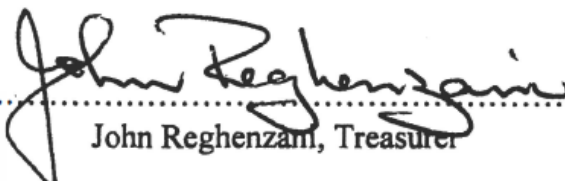
No significant change in nature of these activities occurred during the year.

#### Operating Result

The loss for the year amounted to \$79,929 (2015 year profit \$188,416).

Signed in accordance with a resolution of the Members of the Committee.

  
.....  
Geoff Elliot, Chairperson

  
.....  
John Reghenzani, Treasurer

Dated this twentieth day of July .....2016

## QUEENSLAND WATER AND LAND CARERS INC.

### INCOME AND EXPENDITURE STATEMENT FOR THE YEAR ENDED 30 JUNE 2016

	Note	2016 \$	2015 \$
<b>INCOME</b>			
Grants		430,000	494,000
'Reef, Range & Red Dust' Conference Income		68,245	54,169
Interest		1,257	4,265
Other Income		26,420	0
		<u>525,922</u>	<u>552,434</u>
<b>EXPENSES</b>			
Audit Fees		2,200	2,080
Bank Charges		183	208
Bookkeeping		6,064	5,943
Computer Software & Expenses		3,423	5,423
Consultancy Fees		122,505	2,300
Consultants & Forums - Department of Environment		11,513	42,393
Donations & sponsorships		10,655	6,876
Depreciation Expense		2,036	7,246
Dues & Subscriptions		2,398	4,071
Honorariums		8,848	7,056
Insurance		47,046	43,997
Licence Fees		0	71
Meeting Expenses		5,240	269
Promotion & Marketing		11,183	6,067
Provision for Annual Leave		1,634	8,556
'Reef, Range & Red Dust' Conference Expenses		118,448	6,081
Rent		3,687	3,395
Stationery, Postage & Printing		4,414	2,245
Sundry Expenses		254	352
Sundry Projects		3,571	460
Superannuation		10,980	9,620
Telephone & Internet		4,291	5,870
Travel & Accommodation		102,896	80,671
Volunteer Expenses		2,946	0
Wages & Salaries		116,601	106,941
Website Maintenance		2,264	5,319
Workers' Compensation		571	508
		<u>605,851</u>	<u>364,018</u>
Net Surplus / (Deficit)		<u>(79,929)</u>	<u>188,416</u>

*The accompanying notes form part of these financial statements.*



## QUEENSLAND WATER AND LAND CARERS INC.

### ASSETS AND LIABILITIES STATEMENT AS AT 30 JUNE 2016

	Note	2016 \$	2015 \$
<b>CURRENT ASSETS</b>			
Cash		167,437	228,624
Accounts Receivable		22,462	46,000
Prepaid Insurance		19,896	19,192
Total Current Assets		<u>209,795</u>	<u>293,816</u>
<b>NON CURRENT ASSETS</b>			
Computers at Cost		11,532	11,532
Less Accumulated Depreciation		<u>(11,495)</u>	<u>(11,449)</u>
		37	83
Website at Cost		30,014	30,014
Less Accumulated Depreciation		<u>(30,014)</u>	<u>(28,262)</u>
		0	1,752
Furniture & Fixtures at Cost		4,222	4,222
Less Accumulated Depreciation		<u>(3,142)</u>	<u>(2,904)</u>
		1,080	1,318
Total Non-Current Assets		<u>1,117</u>	<u>3,153</u>
<b>TOTAL ASSETS</b>		<u>210,912</u>	<u>296,969</u>
<b>CURRENT LIABILITIES</b>			
Visa Card		943	(1,574)
PAYG Withholding Payable		6,631	1,689
Provision for Annual Leave		16,498	14,863
GST Liability		(619)	12,253
Superannuation Payable		0	2,350
		<u>23,453</u>	<u>29,581</u>
<b>TOTAL LIABILITIES</b>		<u>23,453</u>	<u>29,581</u>
<b>NET ASSETS</b>		<u>187,459</u>	<u>267,388</u>
<b>MEMBERS' FUNDS</b>			
Accumulated Funds at the beginning of the year		267,388	78,972
Net Surplus/(Loss) for the period		<u>(79,929)</u>	<u>188,416</u>
<b>ACCUMULATED FUNDS AT YEAR END</b>		<u>187,459</u>	<u>267,388</u>

*The accompanying notes form part of these financial statements.*

## QUEENSLAND WATER AND LAND CARERS INC.

### NOTES TO THE FINANCIAL STATEMENTS FOR THE YEAR ENDED 30 JUNE 2016

#### **Note 1: Summary of Significant Accounting Policies**

This financial report is a special purpose financial report prepared in order to satisfy the financial reporting requirements of the Associations Incorporation Act Queensland. The committee has determined that the association is not a reporting entity.

The financial statements have been prepared on an accruals basis and is based on historic costs and does not take into account changing money values or, except where specifically stated, current valuations of non-current assets.

The following significant accounting policies, which are consistent with the previous period unless otherwise stated, have been adopted in the preparation of this financial report.

a. **Income Tax**

The Association has self assessed and understands that it is tax exempt.

b. **Property, Plant and Equipment (PPE)**

Depreciation on the website has been calculated on the straight line basis over the asset's expected useful life. The furniture and fittings and computers are depreciated between 10 -66.67% using diminishing value method.

c. **Cash and Cash Equivalents**

Cash and cash equivalents includes cash on hand and deposits held at call with banks.

d. **Revenue and Other Income**

Revenue is measured at the fair value of the consideration received or receivable after taking into account any trade discounts and volume rebates allowed. Revenue is recorded on receipt or banking, whichever occurs first.

All revenue is stated net of the amount of goods and services tax (GST).

e. **Goods and Services Tax (GST)**

Revenues, expenses and assets are recognised net of the amount of GST, except where the amount of GST incurred is not recoverable from the Australian Taxation Office (ATO). Receivables and payables are stated inclusive of the amount of GST receivable or payable. The net amount of GST recoverable from, or payable to, the ATO is included in the statement of financial position.

f. **Employee Provisions**

Provision is made for the association's liability for employee benefits arising from services rendered by employees to the end of the reporting period. Employee benefits have been measured at the amounts expected to be paid when the liability is settled.



## QUEENSLAND WATER AND LAND CARERS INC

### STATEMENT BY MEMBERS OF THE COMMITTEE

In accordance with a resolution of the committee of Queensland Water and Land Carers Inc, the members of the committee declare that:

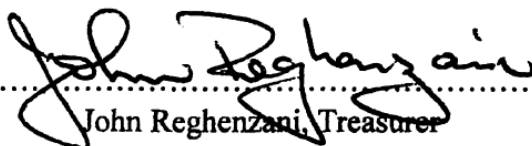
- 1 the financial statements as set out on pages 2 to 4 present a true and fair view of the financial position of Queensland Water and Land Carers Inc as at 30 June 2016 and its performance for the year ended on that date in accordance with the accounting policies described in Note 1 to the financial statements and the requirements of the Associations Incorporation Act; and,
- 2 at the date of this statement, there are reasonable grounds to believe that Queensland Water and Landcarers Inc will be able to pay its debts as and when they fall due.

This statement is signed for and on behalf of the committee by:



.....

Geoff Elliot, Chairperson



.....

John Reghenzani, Treasurer

Dated this... twentieth ..... day of ..... July ..... 2016

## JOHN GOSPER AUDIT AND ASSURANCE PTY LTD

A.B.N. 60 144 477 369

**Postal:**

P.O. Box 2075  
TOOWOOMBA QLD 4350

2 Mylne Street  
TOOWOOMBA QLD 4350

**Telephone:** (07) 4638 1100

**Facsimile:** (07) 4638 5639

**Email:** [deanna@jgaudit.com](mailto:deanna@jgaudit.com)

### INDEPENDENT AUDITOR'S REPORT

#### TO THE MEMBERS OF QUEENSLAND WATER AND LAND CARERS INC

##### Report on the Financial Report

We have audited the accompanying financial report, being a special purpose financial report, of Queensland Water and Land Carers Inc (the association), which comprises the assets and liabilities statement as at 30 June 2016, the income and expenditure statement for the year then ended, notes comprising a summary of significant accounting policies and other explanatory information, and the statement by members of the committee.

##### Committee's Responsibility for the Financial Report

The committee of Queensland Water and Land Carers Inc is responsible for the preparation and fair presentation of the financial report, and has determined that the basis of preparation described in Note 1 is appropriate to meet the requirements of the Associations Incorporation Act (Qld) 1981 and is appropriate to meet the needs of the members. The committee's responsibility also includes such internal control as the committee determines is necessary to enable the preparation and fair presentation of a financial report that is free from material misstatement, whether due to fraud or error.

##### Auditor's Responsibility

Our responsibility is to express an opinion on the financial report based on our audit. We have conducted our audit in accordance with Australian Auditing Standards. Those standards require that we comply with relevant ethical requirements relating to audit engagements and plan and perform the audit to obtain reasonable assurance whether the financial report is free from material misstatement.

An audit involves performing procedures to obtain audit evidence about the amounts and disclosures in the financial report. The procedures selected depend on the auditor's judgment, including the assessment of the risks of material misstatement of the financial report, whether due to fraud or error. In making those risk assessments, the auditor considers internal control relevant to the association's preparation of the financial report that gives a true and fair view, in order to design audit procedures that are appropriate in the circumstances, but not for the purpose of expressing an opinion on the effectiveness of the association's internal control. An audit also includes evaluating the appropriateness of accounting policies used and the reasonableness of accounting estimates made by the committee, as well as evaluating the overall presentation of the financial report.

We believe that the audit evidence we have obtained is sufficient and appropriate to provide a basis for our audit opinion.

##### Opinion

In our opinion, the financial report presents fairly, in all material respects, the financial position of Queensland Water and Land Carers Inc as at 30 June 2016 and its financial performance for the year then ended in accordance with the accounting policies described in Note 1 to the financial statements, and the Associations Incorporation Act (Qld) 1981.

##### Basis of Accounting and Restriction on Distribution

Without modifying our opinion, we draw attention to Note 1 to the financial report, which describes the basis of accounting. The financial report has been prepared to assist Queensland Water and Land Carers Club Inc to meet the requirements of the Associations Incorporation Act (Qld) 1981. As a result, the financial report may not be suitable for another purpose.



John H Gosper B.Comm F.C.P.A.  
John Gosper Audit and Assurance Pty Ltd  
PO Box 2075, Toowoomba QLD 4350

Dated this 26<sup>th</sup> day of July 2016



# P eople we work with.



Qld Regional  
NRM GROUPS  
COLLECTIVE

There's a lot happening *in our backyard*



56 regional groups  
across Australia are  
working together to care  
for our natural resources.



Australian Government  
Department of the Environment

# C ontact us:

**Darryl Ebenezer**  
**Executive Officer**  
**Queensland Water and Land Carers (QWaLC)**  
**E: [darryl@qwalc.org.au](mailto:darryl@qwalc.org.au)**  
**W: [qwalc.org.au](http://qwalc.org.au)**









*Above: Lake Moondarra (Mount Isa) at approx. 30%*

**P**roudly supported by



**Queensland**  
Government



**QWaLC**  
QUEENSLAND WATER & LAND CARERS

