

**NRM**  
**REGIONS**  
**AUSTRALIA**



National  
Landcare  
Network

# **NATIONAL STATEMENT OF COLLABORATION PRINCIPLES**

*A guiding framework for collaboration and engagement between  
Community Landcare and Regional NRM organisations*

*The framework builds on recognition that we are stronger together in achieving outcomes for communities and landscapes. It outlines principles for delivering on our shared objectives, and the mechanisms designed to bring these principles to life.*



*Acknowledgement of Country..*

*We acknowledge and pay respect to Aboriginal people as the traditional and original owners, and continuing custodians of this land and acknowledge Elders – past, present and emerging.*

*We acknowledge that Indigenous people have cared for and managed this continent for millennia and continue to care for their country today. We respect Traditional Owners' knowledge, skills and responsibilities in land and sea management and their role in leading the planning and caring for country across Australia.*



## THE CHAIRS' JOINT FOREWORD

ALL LIVING CREATURES PLAY A CRITICAL ROLE IN THE HEALTH OF THE PLANET, AND EVERY BREATH WE TAKE DEPENDS ON THE BREATH OF ANOTHER. WE RELY ON AIR, FOOD, WATER AND MEDICINE AS A BY-PRODUCT OF A HEALTHY PLANET. THE DEMANDS AND STRESSES PLACED ON OUR COUNTRY ARE WIPING OUT SPECIES AND DAMAGING ECOSYSTEMS, WITH MANY OF THE CURRENT GLOBAL HEALTH CHALLENGES BEING LINKED TO THE DECLINE OF BIODIVERSITY AND THOSE ECOSYSTEMS.

SUPPORTING, HELPING AND PROTECTING AUSTRALIA'S BIODIVERSITY IS AN ALIGNMENT OF THE NATIONAL LANDCARE NETWORK AND NATURAL RESOURCE MANAGEMENT ORGANISATIONS ACROSS AUSTRALIA. CONTRIBUTING TO IMPROVED PRACTICES ACROSS PRODUCTIVITY AND LAND MANAGEMENT, SHARING KNOWLEDGE AND RESOURCES WITH COMMUNITIES AND INDUSTRIES, WORKING WITH ALL PEOPLE TO HELP SUPPORT THE OVERALL HEALTH OF THIS COUNTRY THROUGH A CHANGING CLIMATE AND GROWING POPULATION ARE OUR PRIORITIES. WE RECOGNISE THAT THE INCREASED VALUE OF LAND AND WATER FOR FOOD, ENERGY AND HOUSING ARE CONTRIBUTING TO THE STRAIN OF AUSTRALIA'S HEALTH AND CHANGES TO THE CLIMATE AND ENVIRONMENT ARE COMPLEMENTING THOSE STRESSORS.

IN THIS DOCUMENT, WE DEMONSTRATE AND INFORM THE VALUE WE BRING TOGETHER AND INDIVIDUALLY, ECHOING THE IMPORTANCE OF COLLABORATION, ENGAGEMENT AND SHARING, FOR A STRONG AND SUCCESSFUL NATIONAL OUTCOME.

WE ARE HERE FOR OUR MEMBERS, BUT EQUALLY AS IMPORTANT WE ARE ALL HERE FOR A HEALTHY TOMORROW.

ANNIE ANDREWS  
NATIONAL LANDCARE NETWORK

EMMA JACKSON  
NRM REGIONS AUSTRALIA

# PURPOSE OF THE FRAMEWORK



*The National Statement of Collaboration Principles is a guiding framework co-designed to support Community Landcare and Regional NRMs as they work together to ensure effective and efficient outcomes for the environment. In outlining principles and mechanisms for delivering on our shared objectives, the framework has provided an opportunity for the National Landcare Network and NRM Regions Australia to redefine our strategic national partnership.*

## THE PURPOSE OF THE FRAMEWORK IS TO:

- Help us improve outcomes for our communities and landscapes;
- Demonstrate the value of the NRM and Landcare system to our members, partners and funders;
- Inform our members and others about how we work around the country; and
- Demonstrate ways we can encourage a positive culture of collaboration and engagement across the entire sector.

# OUR SHARED GOALS

*...a guiding framework co-designed to support Community Landcare and Regional NRMs as they work together to ensure effective*

Natural Resource Management in Australia is continuously evolving to meet the challenges of our times. This framework lays the foundations for the next five years, recognising how important both Landcare and the Regional NRM organisations are to environmental management, community resilience and ecosystem restoration in Australia. NRM organisations oversee the creation of Regional NRM Plans and integrated delivery and funding processes. Community Landcare\* is a grassroots network across Australia, leading in long-term community-based environmental volunteerism and knowledge exchange that supports on-ground NRM delivery.

Community Landcare and Regional NRM Organisations across Australia share a common purpose in addressing significant challenges faced by communities in land stewardship, natural resource management, and farm

productivity. As a sector together, we strive for soil, water, landscape and habitat health outcomes against a backdrop of increasing climate extremes. Our shared goals guide the establishment of enduring and productive relationships to build our sector, the communities we serve, and the resilience of our landscapes.

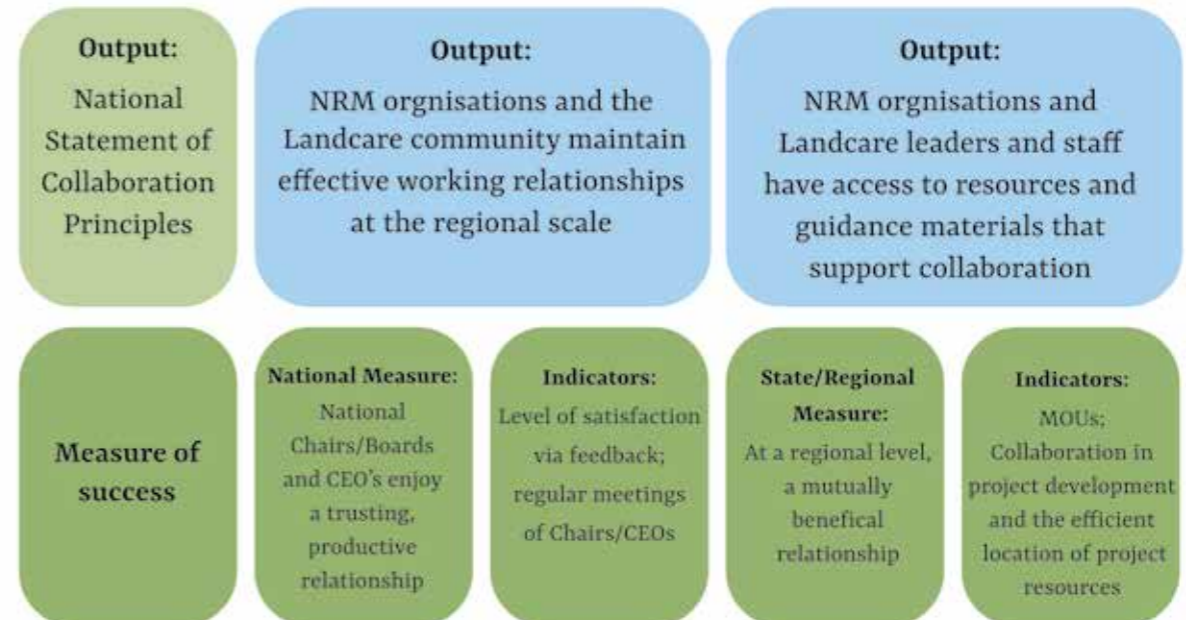
There is diversity in our organisational ecosystem and some overlap in our respective roles and goals. To achieve our common objective, overlapping boundaries are beneficial as this provides the system with a buffer in line with established resilience principles. However, we need to define some principles for our collaboration, to guide our dynamic relationships, and especially to provide a process that helps to clarify roles and functions at the state and regional level.

Note throughout the text Landcare is inclusive of coast, land, bush, water, and river care groups and friends of organisations.



- Purpose 1.** Help us improve outcomes for our communities and landscapes.
- Purpose 2.** Show the value of NRM and Landcare to our members, partners and funders.
- Purpose 3.** Inform our members and others about how we work around the country.
- Purpose 4.** Demonstrate ways we can improve culture, engagement and alignment

- Outcome:** Supportive and productive relationships between the NRM Sector and Community Landcare.
- Sub-Outcome:** NRM people and Landcare people recognise and value the importance of collaboration and behave in supportive ways.
- Sub-Outcome:** Governments and other stakeholders recognise that NRM and Landcare are working together to inform, and implement policy.

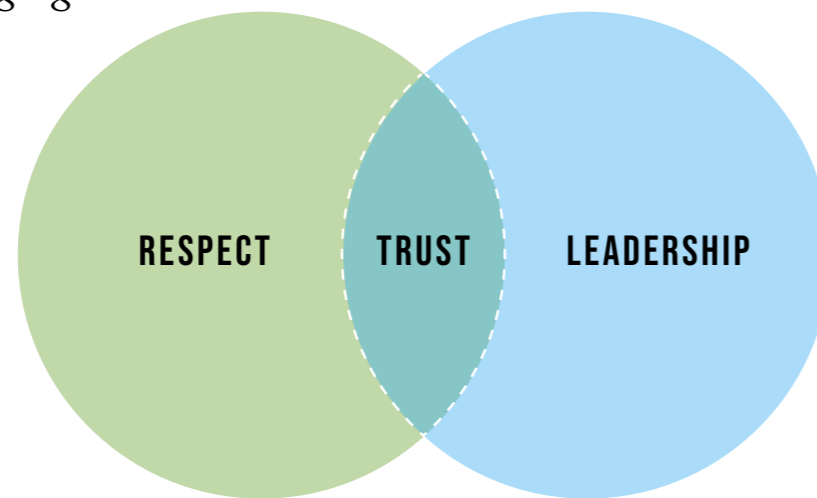


# PRINCIPLES OF COLLABORATION

*The Collaboration Principles provide a foundation for the relationship between the National Landcare Network & NRM Regions Australia acknowledging that:*

- Both networks have a critical role in environmental/natural resource management in Australia.
- Advantages to sharing roles are recognised and encouraged, particularly as having extra buffers in the system enhances resilience.
- Many activities are scale dependent and require social or place-based processes to succeed.
- Local and regional processes need to be recognised as parallel, nested or overlapping to foster collaboration.
- We respect the differences between each organisation's directions and priorities.
- We work to articulate, acknowledge and understand our respective roles and responsibilities (both locally and regionally) to increase alignment and collaboration, in doing so, we acknowledge that this will look different around the country.

The principles below have been proposed to guide effective collaboration between Community Landcare and Regional NRM Organisations.



- |                    |  |
|--------------------|--|
| <b>RESPECT</b>     | <ul style="list-style-type: none"> <li>• Model the behaviours, walking the talk</li> <li>• Focus on the commonalities</li> <li>• Recognise and advocate for each other</li> </ul>  |
| <b>LEADER-SHIP</b> | <ul style="list-style-type: none"> <li>• Acknowledge and respect the differences between each organisation's directions and priorities.</li> <li>• Where there are opportunities for mutual benefit, work together to achieve reciprocity.</li> <li>• Show commitment to our relationship, working to resolve differences early and in-house.</li> </ul> |
| <b>TRUST</b>       | <ul style="list-style-type: none"> <li>• Engage in open and transparent exchange of information as appropriate.</li> <li>• Share challenges while viewing perceived threats as potential opportunities.</li> <li>• Take time to build understanding at all levels of our organisations.</li> </ul>   |



## DELIVERING STRONGER COLLABORATION

*The objectives of this framework could be achieved through any number of the following mechanisms or activities as co-designed at the local and regional scale:*

- MOUs at various levels (that are aligned by principles, values and behaviours)
- Joint events such as field days and workshops (with collaboration in organising the events but also through joint presentations/delivery)
- Collaborative projects with Joint Steering Committee representation, as appropriate
- Role modelling a collaborative approach to all our members and communities
- Establishing communication protocols at the jurisdictional and regional level that work for all parties
- Establishing a Working Group at the national level
- Joint media and publications around key stories and case studies
- Collaboratively participating in planning processes, providing input into plans, and reviewing draft documents with assurances given that collective input will be incorporated appropriately.
- Increased community engagement resulting in improved landscape-scale outcomes.
- Increasing investment in the regional model and the efficient and effective allocation of funds to delivery partners including Community Landcare.
- Celebrating the collective achievements and benefits of collaboration.

# MEASURE OF SUCCESS

*Success could be gauged through any number of the following measures or others as co-designed:*



## NATIONAL MEASURES OF SUCCESS

Measure – National Chairs/Boards and CEOs enjoy a trusting, productive relationship.

Indicator – Regular meetings between Chairs/CEOs at the national level.

Indicator – Level of satisfaction via annual feedback mechanism (e.g., survey/strawpoll).

---

## STATE AND REGIONAL MEASURES OF SUCCESS

Measure – At a regional level, a mutually beneficial relationship.

Indicator – Collaboration in project development and the efficient and effective allocation of project resources.

Indicator – MOUs at the jurisdictional and regional scale.

# EVALUATION

*The Working Group will meet 3 and 6 months after finalisation of the National Statement of Collaboration Principles guiding framework to monitor progress and effectiveness, with a full review after 12 months.*



National  
Landcare  
Network

**NRM**  
**REGIONS**  
**AUSTRALIA**

