



NRM Expansion Program Landcare sector briefing

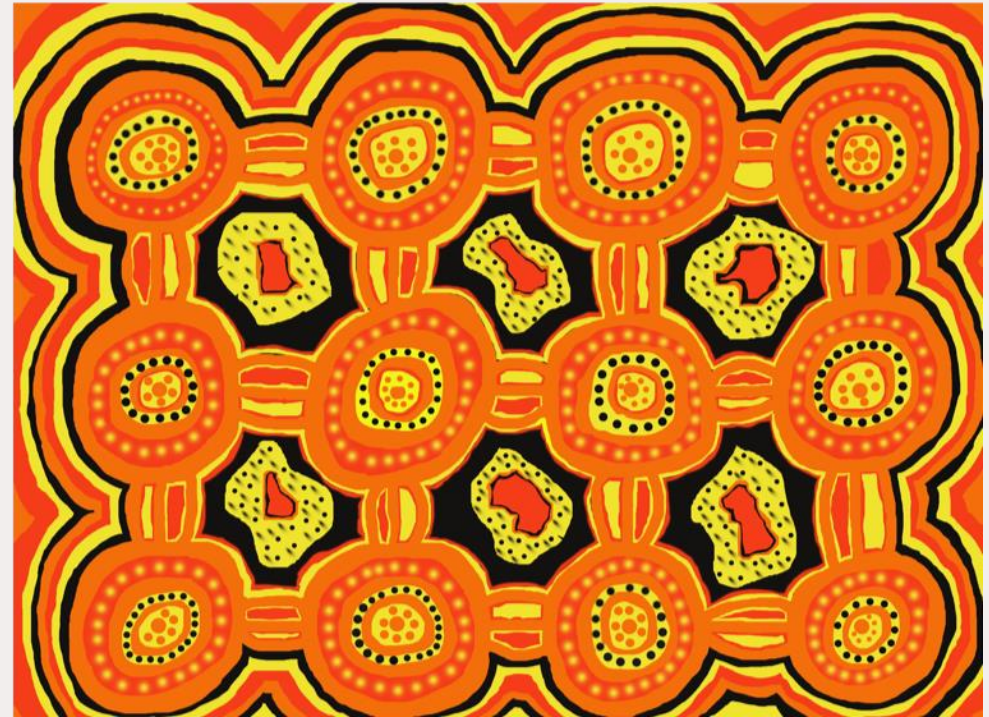
Chris Norman, CEO, NRM Regions Queensland



Acknowledgement of Country

NRM Regions Queensland acknowledges the Traditional Owners of the Country where we meet today.

We acknowledge Elders past and present and the Traditional Owners of the lands and seas which we consider today.



Artwork designed for NRMRQ by Glenn Barry

About NRM

NRM is about **protecting and improving the natural assets that underpin our quality of life**. This includes land, water, biodiversity and climate.

NRM influences how landscapes are managed by landholders and public land managers.



About the NRM sector



Australia uses a regional delivery model, with 54 regional NRM organisations nationally and **12 in Queensland**.

In Queensland, regional NRMs are:

- Place-based
- Community-governed (not-for-profit, skills-based boards)
- Long-term (established since the mid-1990s)

Our core niche is the development and delivery of Regional NRM Plans — community-owned plans that align local priorities with State and Commonwealth objectives.

About NRM Regions Queensland



- The single, collective voice for Queensland's regional NRM sector.
- A member-based organisation formed in 2002.
- Funded by the 12 regional NRM organisations, with additional project funding.
- Recently secured \$117.84 million for the sector through the Qld Government's NRM Expansion Program.

ON-THE- GROUND

While each regional NRM organisation is different, their NRM Plans have common characteristics

Regional NRM Plans

- Strategic and evidence-based.
- Aligned and integrated.
- Community and stakeholder driven.
- Knowledge-rich and place-based.
- Landscape-scale and cross-tenure.
- Systems-thinking approach.
- Transparent and accountable.
- Adaptive and outcomes-focused.
- Delivered through partnerships.





LANDCARE

- **Community-led and volunteer-driven**
- **Hyper-local** (property, district, sub-catchment)
- **Peer-to-peer learning and influence** (especially farmers)
- **Informal and flexible** (can act outside funding cycles)
- **Long-term local presence and stewardship**
- **Entry point** for community participation
- **Local knowledge** and lived experience
- **Advocacy and representation** of community views to government



SYNERGIES

- **On-ground action** (planting, fencing, erosion, habitat work)
- **Practice change** over time
- **Community engagement, trust and social licence**
- **Partnerships** (with each other, councils, NGOs, government)
- Contributing to biodiversity, land and water outcomes
- **Citizen science** and data collection (to varying degrees)
- Education and awareness raising
- Advocacy and policy influence
- **Capacity building** and strengthening delivery capability



REGIONAL NRM ORGANISATIONS

- **Landscape-scale** planning and prioritisation
- **Regional NRM** plans, strategies and investment frameworks
- **Coordinate** and direct regional investment
- **Program design**, funding distribution and contract management
- **Cross-tenure** and cross-sector coordination
- **Alignment** with government policy and funding priorities
- **Monitoring, evaluation** and reporting at scale
- **Technical expertise** and specialist capability
- **Convening role** across stakeholders (including Landcare)



Different roles, shared outcomes: Landcare drives local action and behaviour change, while regional NRM organisations provide the strategy, coordination and investment that enable impact at scale.



About the NRM Expansion Program

- The result of a two-year campaign for increased investment in NRM
- The campaign included a suite of projects, prioritised by communities across the state
- Initial request was \$196.4 million. 60% funding received



**“QUEENSLAND’S REGIONAL NRM
ORGANISATIONS PROVIDE CRITICAL
SERVICES ACROSS QUEENSLAND,
ESPECIALLY WITHIN OUR RURAL,
REGIONAL AND REMOTE COMMUNITIES”**

- QUEENSLAND WATER AND LAND CARERS



**NRM
REGIONS
QUEENSLAND**

ON-THE-GROUND

\$106.8M now allocated across 30 projects

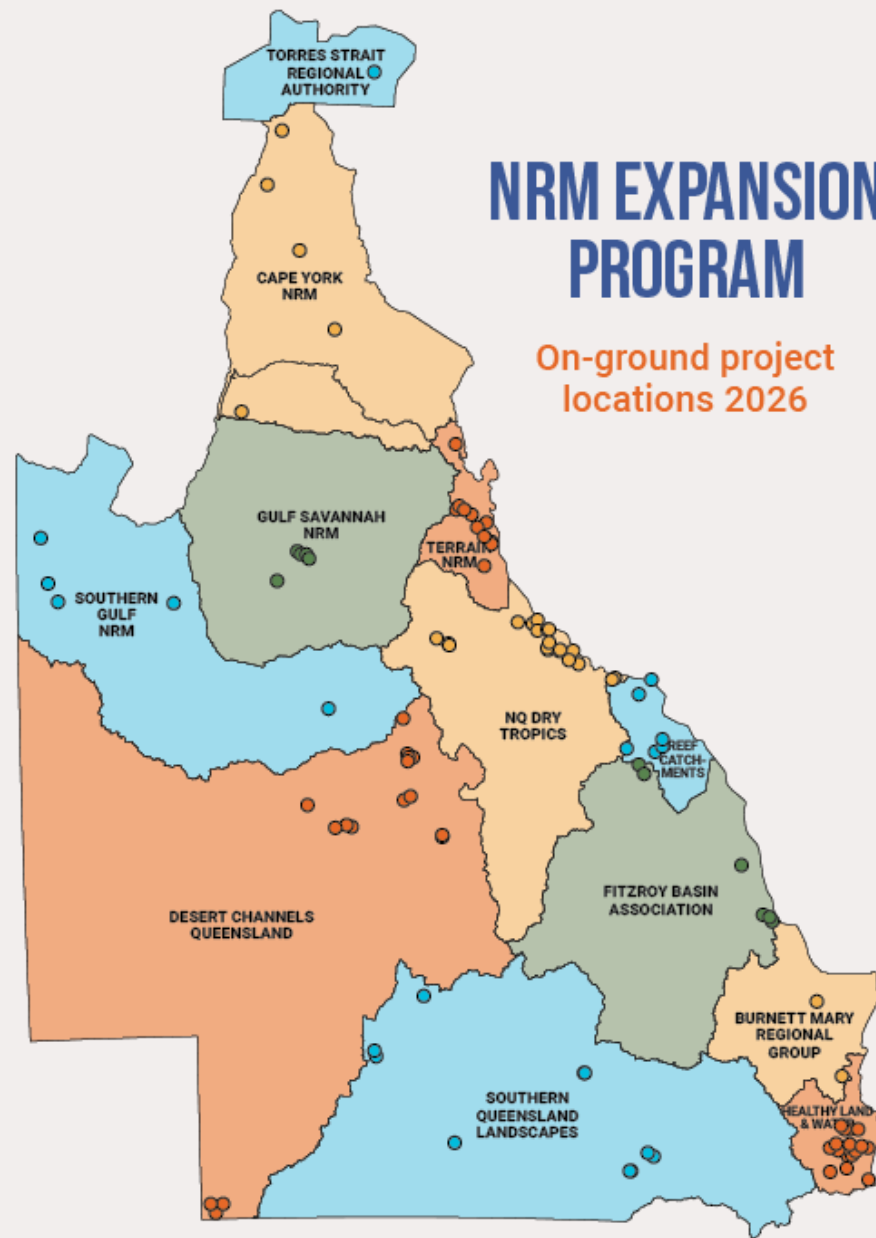
- \$64.61M – land and soil (19 projects)
- \$15.86M – water (9 projects)
- \$19.52M – biodiversity (11 projects)
- \$3.02M – targeted governance, SWIF + communicating impact (2 projects)

Some projects deliver across multiple outcomes



ON-THE-GROUND

- 30 projects
- 300+ on-ground locations
- 1M hectare focus



Landcare as delivery partners

28



on-ground NRMEP
projects currently approved

8+



projects involve
Landcare and catchment groups

15+



Landcare and catchment
groups engaged



DELIVERING
FOR QUEENSLAND



ON-THE-GROUND

Landcare as delivery partners

Cool Burn Squad (BMRG)

This project is working with Landcare groups as delivery partners to support on-ground implementation of cool burning activities. The project combines cultural burning knowledge, community participation and practical landscape management to improve land condition and resilience across priority areas.

Wetlands and Native Vegetation Resilience (CYNRM)

South Cape York Catchments is a key delivery partner in this project, supporting on-ground works aimed at improving the condition and resilience of wetlands and native vegetation across Cape York. The partnership builds on local knowledge, established landholder relationships and catchment-scale delivery experience.



**DELIVERING
FOR QUEENSLAND**



ON-THE-GROUND

Landcare as delivery partners

Urban Rewilding (HLW)

Brisbane Catchments Network and Noosa Landcare are helping coordinate and support community-based restoration activities across South East Queensland. The project focuses on reconnecting fragmented habitats and increasing community participation in urban biodiversity conservation and restoration.

Climate Ready Coastlines (NQDT)

The project is working with four local Landcare groups – Coastal Dry Tropics Landcare Initiative, Lower Burdekin Landcare, Whitsunday Catchment Landcare and **Pioneer Catchment Landcare** – to supply locally sourced native plants for dune revegetation projects at Alva Beach and Wunjunga. By sourcing plants from multiple Landcare nurseries, the project is increasing species diversity while supporting local Landcare capacity and participation in coastal restoration activities.



NRM
REGIONS
QUEENSLAND

DELIVERING
FOR QUEENSLAND



Queensland
Government

ON-THE-GROUND

Landcare as delivery partners

Koala habitat + connectivity (Reef Catchments)

Sarina Landcare Catchment Management Association is one of a number of organisations including TOs and private contractors delivering on-ground works that support koala habitat improvement and landscape connectivity. Activities focus on restoring and enhancing habitat in priority areas while working directly with landholders and local communities.

Islands & Inshore Resilience (Reef Catchments)

The project is working with MangroveWatch to support monitoring and stewardship of coastal and marine habitats. MangroveWatch brings specialist community-based monitoring expertise, helping collect information on the condition of mangrove ecosystems while engaging local communities in long-term coastal management.



NRM
REGIONS
QUEENSLAND

DELIVERING
FOR QUEENSLAND



Queensland
Government

ON-THE-GROUND

Landcare as delivery partners

Threatened Ecological Communities (Reef Catchments)

Sarina Catchment Landcare, **Pioneer Catchment and Landcare Group**, and Whitsunday Catchment Landcare (who combined are the Central Queensland Coast Landcare Network) are delivering on-ground restoration works as project partners. Their involvement supports practical conservation activities aimed at improving the condition, extent and connectivity of threatened ecological communities across the region.

Green Connections (Terrain)

The project is being delivered in partnership with the Wet Tropics Restoration Alliance, TREAT, Barron Catchment Care Association and Community for Coastal and Cassowary Conservation (C4). These organisations contribute local knowledge, volunteers, community engagement and on-ground restoration capacity to reconnect habitats and improve ecological connectivity across the Wet Tropics.



ON-THE-GROUND

LANDCARE CASE STUDY

Nancy Pratt, Pioneer Catchment & Landcare

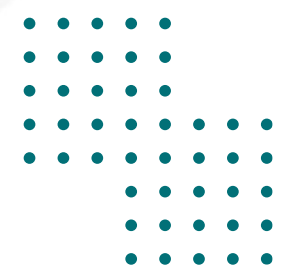




COORDINATED THREAT RESPONSE TO PROTECT THREATENED ECOLOGICAL COMMUNITIES



MACKAY – WHITSUNDAY – ISAAC



A Major Investment in Our Natural Assets

- Delivered through a partnership between Reef Catchments and the Central Queensland Coast Landcare Network (CQCLN).
- Focuses on protecting and restoring two nationally listed Threatened Ecological Communities (TECs).
- These ecosystems have experienced significant declines in extent and condition due to historical clearing, development and ongoing environmental pressures.
- The project aims to improve the health, resilience and long-term survival of these nationally significant habitats.
- CQCLN will undertake practical, on-ground restoration activities across priority sites over the next three years.
- The project adopts a landscape-scale approach to conserving and reconnecting important habitat areas.
- Together, we are working to safeguard these ecosystems for future generations.





Central Qld Coast Landcare Network

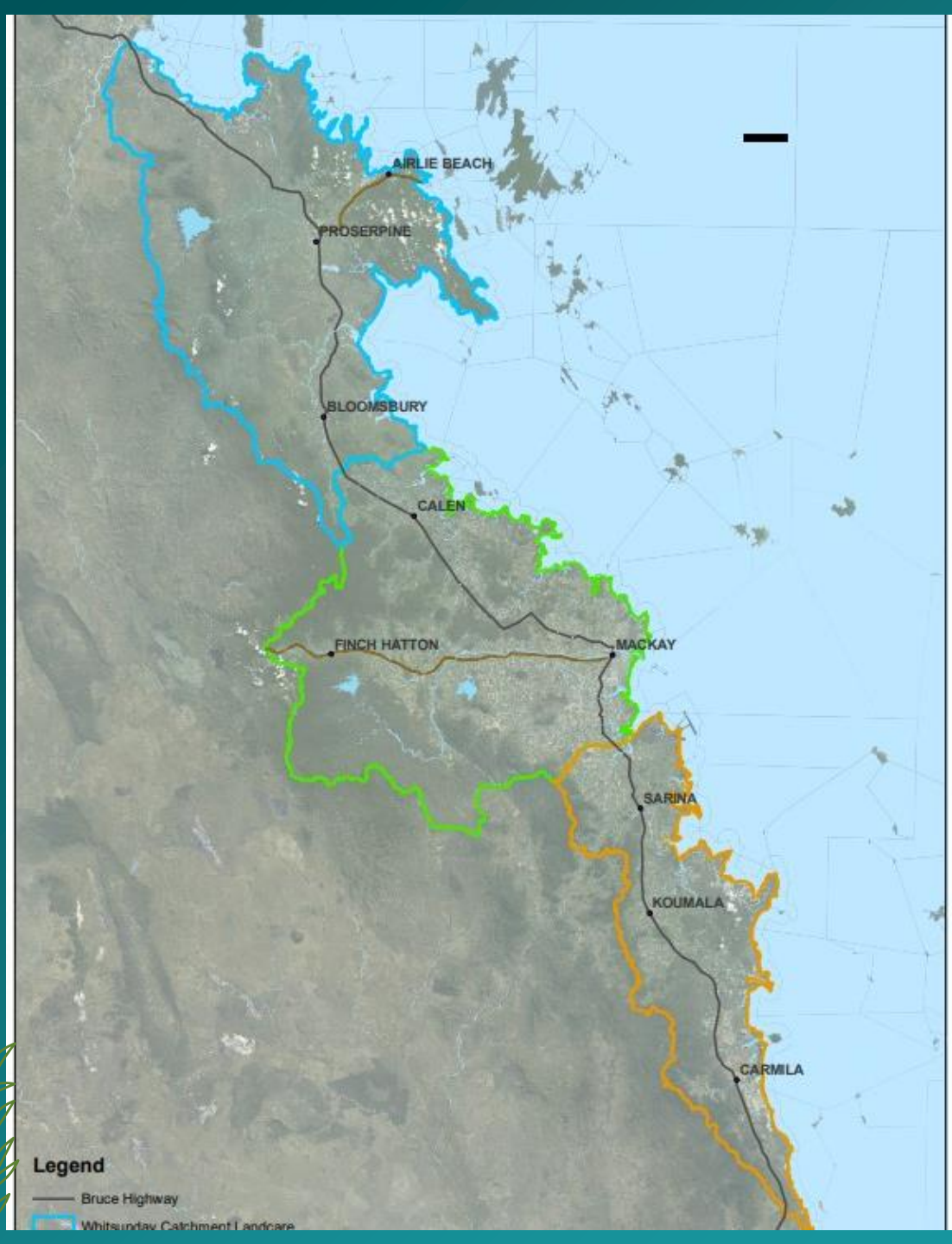
- Our organisations have been caring for the region's landscapes, waterways and biodiversity for more than 30 years.
- Cover over 937,532 hectares (land-based) but are not bound by boundaries.
- Employ 21 staff members with qualifications and experience in Environmental Science, Business Management, Horticulture, Conservation and Land Management.
- Native Plant nurseries with capacity to grow over 85,000 tube stock collectively
- Delivering revegetation, bushland maintenance, native plant supply, ecological consultancy, landholder support, education and training, and conservation initiatives across the region.



Whitsunday
Catchment
Landcare



PIONEER
Catchment
LANDCARE



Legend

— Bruce Highway

Whitsunday Catchment Landcare

What are we Protecting?



Beach Scrub
*Littoral Rainforest and Coastal Vine
Thickets of Eastern Australia*



Broad Leaf Tea Tree Woodlands
Melaleuca viridiflora Woodlands



Landcare's Role Over the Next Tree Year

Over the next three years, the Landcares will work alongside Reef Catchments, landholders and local communities to deliver targeted restoration activities across priority sites.

Importantly, this project is being delivered at a landscape scale, recognising that long-term conservation requires connected habitats and collaboration across property boundaries and regions.



On-ground Works across 42 sites will include:

- 90ha of weed management and control.
- Restoration and rehabilitation of 3 hectares of degraded habitat through revegetation using local native species.
- Protection of remnant vegetation.
- Monitoring and maintenance activities.

Additionally:

- Community engagement and education.
- Supporting private landholders to manage and protect TEC habitat on their properties.





Key Support Roles

Landcare

- Identify areas to be targeted
- Attend VegCAT Training
- Complete vegetation site monitoring assessments with Reef Catchment
- Undertake revegetation including site preparation, supply and planting of 2,500 local provenance tube stock, ongoing watering and maintenance over the life of the project
- Strategic Weed management and control in agreed areas of remnant TEC's within project timeframes
- Report activities daily using Survey 123 app
- Report all WHS issues and incidents
- Supply 2,500 local provenance tube stock

Reef Catchments

- Provision of funds to enable project completion
- Communications and PR Linked to the project both to neighbouring landholders, general public and the funding body (Qld Government)
- Provide local project management, coordination and industry liaison
- Liaison and coordination between Landcare and landholders including forming landholder agreements
- Complete vegetation site monitoring assessments with Landcare
- Coordinate and complete quality assurance controls on work sites
- Testing to ensure quality requirements are met
- Ensure extension of project outcomes to be delivered to industry and funding agencies

Project Outcomes



- Deliver measurable on-ground outcomes across priority sites over the next three years, ensuring lasting environmental benefits beyond the life of the project.
- Protect and improve the condition of nationally listed TEC's.
- Restore degraded habitat through targeted weed control, revegetation and site rehabilitation activities.
- Increase habitat connectivity by strengthening links between remnant vegetation patches and creating wildlife movement corridors.
- Reduce key threats impacting TECs, including invasive weeds, habitat fragmentation and land degradation.
- Enhance biodiversity values and support threatened and regionally significant species that rely on these ecosystems for food, shelter, breeding and movement.
- Engage and support landholders to better understand, manage and protect TECs on their properties.
- Increase community awareness and stewardship through education, and demonstration activities.
- Build long-term conservation outcomes through ongoing monitoring, adaptive management and sustainable land management practices.
- Contribute to broader landscape health, including improved catchment function, water quality and resilience of the Great Barrier Reef region.



Strong Partnerships Deliver Strong Outcomes

Thank You



ANY QUESTIONS?

STAY IN TOUCH

Chris Norman, CEO
NRM Regions Queensland

chris@nrmrq.org.au
0419 790 943
PO Box 4608, Toowoomba East Q 4350



NRM
REGIONS
QUEENSLAND